



KEMPNER WATER SUPPLY CORP.
PO Box 103
KEMPNER, TEXAS 76539
PHONE: 512-932-3701 / 254-547-9430
FAX: 512 - 932-2546



Kempner Water Supply Corporation

Tariff 2025-2026

June 25, 2025

TABLE OF CONTENTS

SECTION A. RESOLUTIONS.....	6
SECTION B. STATEMENTS.....	7
1. Organization.....	7
2. Non-Discrimination Policy.....	7
3. Policy and Rule Application.....	7
4. Corporation Bylaws.....	7
5. Fire Protection Responsibility.....	7
6. Damage Liability.....	7
7. Information Disclosure.....	7
8. Customer Notice Provisions.....	8
9. Grievance Procedures.....	8
10. Office Hours.....	8
11. Customer Service Inspections.....	8
12. Sub-Metering Responsibility.....	8
13. Voluntary Contributions Policy.....	8
14. Prohibition Against Resell of Water.....	9
SECTION C. DEFINITIONS.....	10
Corporation.....	10
Active Service.....	10
Applicant.....	10
Base Rate.....	10
Board of Directors.....	10
Bulk Water.....	10
Bylaws.....	10
Certificate of Convenience and Necessity (CCN).....	10
Co-Applicant.....	10
Designee.....	10
Developer.....	10
Disconnection of Service.....	10
Easement.....	10
Equity Buy-In Fee.....	10
Impact Fee.....	11
Final Plat	11
Hazardous Condition.....	11
Hydrants.....	11
Illegal Connection.....	11
Public Utility Commission (PUC).....	11
Proof of Ownership.....	11
Rural Utilities Service (RUS).....	11
Renter.....	12
Re-Service.....	12
Road Bore	12
Service Application and Agreement.....	12
Service Availability Charge.....	12

Service Investigation Fee.....	12
Service Trip Fee.....	12
Service Unit.....	12
Subdivide	12
Sub-divider	12
Subdivision	12
Tariff.....	12
Texas Commission on Environmental Quality (TCEQ)	12
Texas Water Development Board (TWDB)	12
Transferee.....	13
Transferor	13
Usage	13
United States Department of Agriculture (USDA)	13
Water Conservation Penalty.....	13
SECTION D. GEOGRAPHIC AREA SERVED.....	13
Service Area Map.....	14
SECTION E. SERVICE RULES AND REGULATIONS	15
1. Service Entitlement.....	15
2. Service Location and Classification	15
3. Service Requirements	15
4. Infrastructure Extension Reimbursement	16
5. Ownership of Equipment	16
6. Activation of Standard Service.....	16
7. Activation of Non-Standard Service.....	16
8. Changes in Service Classification.....	16
9. Membership.....	17
10. Cancellation of Membership.....	17
11. Liquidation Due to Delinquency.....	18
12. Cancellation Due to Policy Non-Compliance.....	18
13. Re-assignment of Canceled Membership.....	18
14. Mortgaging of Memberships.....	18
15. Owners and Renters.....	19
16. Denial of Service.....	19
17. Applicant's or Transferee's Recourse.....	20
18. Insufficient Grounds for Refusal of Service.....	20
19. Deferred Payment Agreement.....	20
20. Charge Distribution and Payment Application.....	20
21. Due Dates, Delinquent Bills, and Service Disconnection Date.....	21
22. Rules for Disconnection of Service.....	21
23. Billing Cycle Changes.....	24
24. Back-Billing.....	24
25. Disputed Billing.....	24
26. Inoperative Meters.....	24
27. Bill Adjustment.....	24
28. Meter Tampering and Damage to Property.....	25
29. Meter Relocation.....	25
30. Prohibition of Multiple Connections to a Single Tap.....	25

31. Master Metered Account Regulations.....	26
32. Member's Responsibility.....	26

SECTION F. DEVELOPER, SUBDIVISION AND NON-STANDARD SERVICE REQUIREMENTS.....29

PART 1. General Requirements.....	29
1. Purpose.....	29
2. Application of Rules.....	29
3. Nonstandard Service Application.....	29
4. Design.....	30
5. Non-standard Service Contract.....	31
6. Construction of Facilities by Applicant Prior to Execution of Service Contract.....	31
7. Dedication of Water System Extension to Corporation.....	31
8. Property and Right-of-Way Acquisition.....	32
9. Two (2) Business Days' Notice.....	32
10. Insurance, Performance and Payment Bonds.....	32
11. Prepayment for Construction and Service.....	32
PART II. Request for Service to Subdivided Property.....	33
1. Sufficient Information.....	33
2. Service Within Subdivisions.....	33
3. Final Approval.....	34

SECTION G. RATES AND SERVICE FEES.....35

1. Service Investigation Fee.....	35
2. Membership Fee.....	35
3. Easement Fee.....	35
4. Administrative Fee.....	35
5. Easement Fee with Line Extension.....	35
6. Installation Fee.....	35
7. Meter Tap Fee.....	36
8. Meter Drop-In Fee.....	36
9. Road Bore Fee.....	36
10. Equity Buy-In Fee.....	36
11. Monthly Charges.....	37
12. Assessment.....	37
12. Infrastructure Reimbursement Fee.....	37
14. Late Payment Fee.....	37
15. Returned Check Fee.....	37
16. Reconnect Fee.....	37
17. Meter Test Fee.....	37
18. Service Trip Fee.....	38
19. Equipment Damage Fee.....	38
20. Meter Tampering and Damage to Property Penalty.....	38
21. Transfer Fee.....	38
22. Information Copy Fee.....	38
23. Customer Service Inspection Fee.....	38
24. Cross Connection Backflow Testing.....	38
25. Temporary Service for Inspections Fee.....	39
26. Master Metered Accounts.....	39

27. Customer Notice Provisions.....	39
28. Franchise Fee Assessment.....	39
29. Regulatory Assessment.....	39
30. Additional Assessment.....	39
31. Other Fees.....	39
32. Bulk Water Sales.....	40
33. Lots Not Being Connected to Corporation's Water.....	40
SECTION H. Drought Contingency and Emergency Water Demand Management Plan.....	41
1. Introduction.....	41
2. Public Involvement.....	41
3. Coordination with Regional Water Planning Group.....	41
4. Trigger Conditions.....	41
5. Stage Levels of Water Allocations.....	42
6. Initiation and Termination Procedures.....	43
7. Penalties for Violations.....	44
8. Exemptions or Waivers.....	45

SECTION A. RESOLUTIONS

THE BOARD OF DIRECTORS OF KEMPNER WATER SUPPLY CORPORATION ESTABLISHES THAT:

1. This Tariff of the Kempner Water Supply Corporation, serving in list or name Lampasas, Coryell, Bell, and Burnet counties consisting of Sections A. through K. and forms inclusive, is adopted and enacted as the current regulations and policies effective as of June 25, 2025.
2. Only those preexisting written contracts or agreements executed by the present or previous Board of Directors shall remain in effect unless the contract or agreement requires compliance with changes of the tariff from time to time.
3. The adoption (or revisions) of this tariff does not prohibit or limit the Corporation from enforcing previous penalties or assessments from before the current effective date.
4. An official copy of this and all policies or records shall be available during regular office hours of the Corporation. The Secretary of the Corporation shall maintain the original copy as approved and all previous copies for exhibit.
5. The rules and regulations of state or federal agencies having jurisdiction shall supersede any terms of this policy. If any section, paragraph, sentence, clause, phrase, word, or words of this policy are declared unconstitutional or invalid for any purpose, the remainder of this policy shall not be affected.
6. This tariff has been adopted in Open Meeting in compliance with the Open Meeting Act, Chapter 551 of the Texas Government Code.

PASSED and APPROVED this 25th day of June 2025.

Billy Malady
President, Kempner Water Supply Corporation

SEAL

ATTEST:

Dan Christy
Secretary, Kempner Water Supply Corporation

SECTION B. STATEMENTS

1. **Organization** - The Kempner Water Supply Corporation (“Corporation”) is a member-owned, non-profit Corporation INCORPORATED pursuant to the Texas Water Code Chapter 67, and the provisions of the Texas Business Organizations Code applicable to member owned member controlled non-profit Corporations for the purpose of furnishing potable water utility service. Corporation operating policies, rates, and regulations are adopted by the Board of Directors elected by the Members of the Corporation.
2. **Non-Discrimination Policy** - Membership and service in the Corporation are provided to all Applicants who comply with the provisions of this Tariff regardless of race, creed, color, national origin, sex, disability, or marital status.
3. **Policy and Rule Application** - These policies, rules, and regulations apply to the water services provided by the Corporation. Failure on the part of the Member, Consumer, or Applicant to observe these policies, rules and regulations give the Corporation the authority to deny or discontinue service, according to the terms of this Tariff as amended from time to time by the Board of Directors of the Corporation.
4. **Corporation Bylaws** - The Corporation Members have adopted bylaws which establish the make-up of the Board of Directors and other important regulations of the Corporation. The bylaws are on file in the Corporation’s office.
5. **Fire Protection Responsibility** - The Corporation does not provide, nor imply that fire protection is available throughout the distribution system, except where expressly required by municipal ordinance or agreed to by the Corporation. All hydrants or flush valves are for the operation and maintenance of the system and may be used by authorized fire departments in accordance with a contract with the Corporation to supply water for use in fire suppression. The Corporation reserves the right to remove any hydrant, due to improper use or detriment to the system as determined by the Corporation, at any time without notice, refund, or compensation to the contributors unless such hydrants are installed pursuant to the terms of a Non-Standard Service Contract as provided for in Section F, in which event the terms and conditions of the Contract shall apply.
6. **Damage Liability** - The Corporation is not liable for damage caused by service interruptions, events beyond its control, and for normal system failures. The limit of liability of the Corporation is the extent of the cost of the service provided. By acceptance of Membership, Member consents to waiver of such liability.
7. **Information Disclosure** - The records of the Corporation shall be kept in the Corporation office in Kempner, Texas. All information collected, assembled, or maintained by or for the Corporation shall be disclosed to the public in accordance with the Texas Public Information Act. In no event and under no circumstances shall the Corporation disclose the Social Security Number of any member or customer to any person other than an employee of the Corporation. An individual customer may request in writing that their address, telephone number, and account records be kept confidential. Such confidentiality does not prohibit the utility from disclosing this information to an official or employee of the state or a political subdivision of the state acting in an official capacity or an employee of the Corporation acting in connection with the employee’s duties. Further, such confidentiality does not prohibit the Corporation from disclosing the name and address of each member entitled to vote on a list to be made available to the Corporation’s voting members, or their

agents or attorneys, in connection with a meeting of the Corporation's members. The Corporation shall give its Applicants and customers notice of rights to confidentiality under this policy and all prevailing associated fees for such request.

8. **Customer Notice Provisions** - The Corporation shall give notice of monthly rate changes by email and posted on website at www.kempnerwsc.com at least 30 days prior to the effective date of the new rate. The notice shall contain the old rates, new rates, effective date of the new rate, date of Board authorization, and the name and phone number of the Corporation's contact person designated to address inquiries about the rate change.
9. **Grievance Procedures** - Any Member of the Corporation or individual demonstrating an interest under the policies of this Tariff in becoming a Member of the Corporation shall have an opportunity to voice concerns or grievances to the Corporation by the following means and procedures:
 - A. By presentation of concerns to the Corporation's general manager or authorized staff member. If not resolved to the satisfaction of the aggrieved party, then,
 - B. By presenting a letter request to meet with the Board of Directors stating the individual's grievance/concern and the desired result.
 - C. The general manager will schedule a meeting with the Member/customer relations committee.
 - D. The Member/customer relations committee will make a recommendation to the Board.
 - E. The Board of Directors shall respond to the complaint by communicating the Board's decision in writing.
10. **Office Hours** – The Corporation will be open Monday thru Friday from 8:00 am to 4:00 pm.
11. **Customer Service Inspections** - The Corporation requires that a customer service inspection certification be completed prior to providing continuous water service to new construction and for all new members as part of the activation of the standard and some non-standard service. Customer service inspections are also required for any existing service when the Corporation has reason to believe that cross-connections or other potential contaminant hazards exist, or after any material improvement, correction, or addition to the members' water distribution facilities. This inspection is limited to the identification and prevention of cross connections, potential contaminant hazards and illegal lead materials. All mobile homes will be required to have a CSI for the line from the meter to the point of connection. (30 TAC 290.46 (j))
12. **Sub-metering Responsibility** - Sub-metering and non-sub-metering by Master Metered Accounts may be allowed in the Corporation's water distribution system provided the Master Metered Account customer complies with the Public Utility Commission, Chapter 24, Subchapter H rules pertaining to Sub-metering. The Corporation has no jurisdiction or responsibility to the tenants; tenants receiving water under a Master Metered Account are not considered customers of the Corporation. Any interruption or impairment of water service to the tenants is the responsibility of the Master Metered Account Customer. Any complaints regarding sub-metering should be directed to the Public Utility Commission at 888-782-2477.

NOTE: The Corporation should check with the Master Metered Account Customer:

- A. See if they have registered with the PUC, (Texas Water Code Chapter 13 Subchapter M.)
- B. See that they do not charge their tenants more than the total amount of charges billed. If the aggregate bill is greater than the Corporation's charge, the Master Metered Account Customer is considered by the PUC to be a separate Public Water System and will be required to comply with all PUC regulations.

- C. Protect the System's CCN. Should the Master Metered Account Customer continue to violate these or other State regulations, the Corporation will need to request a Cease-and-Desist Order from the PUC. (Texas Water Code Section 13.252 and 16 TAC Section 24.118)
- 13. **Voluntary Contributions Policy** - The Corporation's Board has approved and set up guidelines for accepting voluntary contributions on behalf of emergency service providers in our service area. The policy adopted sets up the guidelines for collection, accounting, and distribution of funds to the respective local emergency service response entities. (Texas Water Code Sections 13.143 & Section 67.017)
- 14. **Prohibition Against Resell of Water** - The meter connection is for the sole use of the Member/customer and is to provide service to only one (1) dwelling or one (1) business. ALL Living Unit Equivalentents are subject to inspection at any time. Extension of pipe(s) to share or resell water to any other persons, dwellings, businesses, or property is prohibited.

SECTION C. DEFINITIONS

Corporation – The Kempner Water Supply Corporation (KWSC).

Active Service – The status of any Member receiving authorized service under the provisions of this Tariff.

Applicant – A person, partnership, cooperative Corporation, Corporation, agency, public or private organization of any type applying for service with the Corporation. A person must have reached age of majority (18) in Texas to apply for service. (Section 129.001, Civil Practice & Remedies Code)

Base Rate – The monthly charge assessed each Member/Customer for the opportunity of receiving service. The Base Rate is a fixed rate based upon the meter size as set forth in the equivalency chart in Section G.

Board of Directors – The governing body elected by the Members of the Corporation. (Section 22.001(1), Texas Business Organizations Code)

Bulk Water – Water intended for potable uses which is transported by tank trucks.

Bylaws – The rules pertaining to the governing of the Corporation adopted by the Corporation Members. (Section 22.001(2), Texas Business Organizations Code)

Certificate of Convenience and Necessity (CCN) – The authorization granted under Chapter 13 Subchapter G of the Texas Water Code for Kempner Water Supply Corporation to provide water utility service within a defined territory. Corporation has been issued Certificate Number 10456. Territory defined in the CCN shall be the Certificated Service Area.

Co-Applicant – Person, partnership, cooperative Corporation, Corporation, agency, public or private organization of any type as designated on the proof of ownership and applying for joint services with the Corporation. Co-applicant is not required to sign application but has been designated by Applicant to maintain, transfer, or cancel membership and assumes the same responsibility of the Applicant.

Designee – Person partnership, cooperative Corporation, corporation, agency, public or private organization of any type designated by the applicant to maintain active account records. Designee does not have the authority to transfer or cancel the membership.

Developer – Any person, partnership, cooperative corporation, corporation, agency, or public or private organization who subdivides land or requests two (2) or more water connections on a single contiguous tract of land [as defined in Section 13.2502 (e)(1) of the Texas Water Code].

Disconnection of Service – The discontinuance of water service by the Corporation to a Member/Customer.

Easement – A private perpetual dedicated right-of-way for the installation of water and or sewer pipelines and necessary facilities which allows access to property for future operation, maintenance, facility replacement, facility upgrades, and/or installation of additional pipelines. This may also include restrictions on the adjacent area to limit the installation of sewer lines or other facilities that would restrict the use of any area of the easement. The easement will be filed in the real property records of the appropriate county or counties. In the event of a land locked property, the utility easement must extend to the property sold so line can go past property to new meter service.

Equity Buy-In Fee – Each Applicant for new service where a new service tap is necessary shall be required to achieve parity with the contributions to the construction of the Corporations facilities

capacity that have been made previously by existing Members. This fee shall be assessed prior to providing or reserving service on a per service unit basis for each property and shall be assigned and restricted to that property for which the service was originally requested.

Impact Fee – Each applicant for new service where a new tap is necessary shall be assessed a one-time charge imposed to help fund infrastructure improvements needed to accommodate new growth. These fees are used to offset the financial impact of new developments on existing water infrastructure and can only be used for items like increased capacity or larger piping included in the Long-Range Plan.

Final Plat – A complete plan for the subdivision of a tract of land showing or referencing Local Tax appraisal maps, access to public road(s), number and size of lots, location of dedicated water easements, and location(s) of lakes, streams, or rivers through the property. The Corporation shall determine if a plat submitted for the purpose of this Tariff shall qualify as a final plat. For purposes of evaluating subdivision service requests under Section F. the Corporation may accept preliminary plats or plats awaiting final approval pending execution of agreement for service by the Corporation.

Hazardous Condition – A condition that jeopardizes the health and welfare of the Members/Consumers of the Corporation as determined by the Corporation or regulatory authority.

Hydrants – Fire hydrants will only be placed on 6” or larger mains. Hydrants and flush valves are used for flushing and quality control of the system.

Illegal Connection – Any connection to the Corporation’s facilities or member/customer facilities without prior consent of the Corporation.

Liquidated Membership – A Membership that has been canceled due to delinquent charges exceeding the Membership Fee or for other reasons as specified in this Tariff.

Living Unit Equivalent – A Living Unit Equivalent (LUE) is defined as the typical flow that would be produced by a small single-family residence located in a typical subdivision. Examples include but are not limited to houses, barn dominiums, mobile homes, tiny houses, and permanent RV’s.

Member – Any person, partnership, cooperative Corporation, Corporation, agency, or public or private organization who holds a membership in the Corporation and who is a record owner of the property served, that has qualified for service and been certified as a member in accordance with the Corporation’s Tariff. (Texas Water Code Section 13.002(11), Texas Water Code Section 67.016(d))

Membership – A non-interest-bearing stock or right of participation purchased from the Corporation evidencing a member’s interest in the Corporation. (See Texas Business Organizations Code Sections 22.053, 22.151(c))

Membership Fee – A fee qualified as such under the terms of the Tariff and the Bylaws of the Corporation assigned to the real estate designated to receive service. The membership fee shall be refundable upon termination of service and surrendering the Membership.

Nonstandard Rate Class– A rate that is applicable to commercial or industrial meters, including master meters with three or more living unit equivalents (LUE’s).

Public Utility Commission (PUC) – State regulatory agency having jurisdiction over water and sewer service utilities and appellate jurisdiction over the rates and fees charged by Non-Profit Water and Sewer Service Corporations 888-782-8477.

Proof of Ownership – For the purpose of this Tariff, Applicants for service and membership shall provide proof of ownership of the real estate to be served by deed of trust, warranty deed, or other recorded documentation. (Texas Water Code Section 67.016(d))

Rural Utilities Service (RUS) – An agency of the United States Department of Agriculture Rural Development Mission Area that provides loan and grant funds for development of rural water and sewer systems.

Renter – A consumer who rents or leases property from a member or who may otherwise be termed a tenant.

Re-Service – Providing service to an Applicant at a location for which service previously existed and where there is an existing setting for a meter. Costs of such re-servicing shall be based on justifiable expenses in connection with such re-servicing.

Road Bore – The drilling and enlarging of channels under roads for pipeline installations.

Service Application and Agreement – A written agreement between the Member/Applicant and the Corporation defining the specific type of service requirements requested on the current service application and agreement form, and the responsibilities of each party required before service is furnished.

Service Availability Charge – The monthly charge assessed each Member/Customer for the opportunity of receiving service. The Service Availability Charge is a fixed rate based upon the meter, service size, or equivalent dwelling unit(s).

Service Investigation Fee – A fee for costs associated with determining if service is available and determining cost of service.

Service Trip Fee – A fee charged for any trip to a member/customer's meter for the purposes relating to the locking/unlocking of meters or at customer's request, during working hours. A service trip fee will also be assessed to any metered bulk customer.

Service Unit – The base unit of service used in facilities design and rate making. For this Tariff, a service unit is a 5/8" X 3/4" or 3/4" X 3/4" water meter.

Standard Rate Class – Residential rate class for a single member on a 3/4 inch meter or Master Meters with only two living unit equivalents (LUE).

Subdivide – To divide the surface area of land into lots or tracts. Note: County will not approve subdivision with 10 acres or more. Developers must submit plats less than 10 acres to the county.

Sub-divider – An individual, firm, Corporation, or other legal entity that owns any interest in land and that directly or indirectly subdivides land into lots as a part of a common promotional plan in the ordinary course of business. (Texas Local Government Code Section 232.021(12) Definitions)

Subdivision – An area of land that has been subdivided into 2 or more lots or tracts and every lot must have its own meter. Lots must be platted and registered with the County and a plat must be provided to the Corporation. (Local Government Code Section 232.021(13) Definitions)

Tariff – The operating policies, service rules, service extension policy, service rates, water use restriction policies, sample application packet, and miscellaneous transaction forms adopted by the Board of Directors. A copy of this Board approved Tariff is on file at the Corporation office and as required by law at the State office of the PUC.

Texas Commission on Environmental Quality (TCEQ) – State regulatory agency having jurisdiction over drinking water, water supply and water quality issues, and non-profit water and sewer service Corporations.

Texas Water Development Board (TWDB) – Is a state agency charged with statewide water planning

and administration of low-cost financial programs for the planning, design, and construction of water distribution systems.

Transferee – An Applicant receiving a Corporation Membership by legal means from a person or entity desiring to forfeit and transfer current rights of Membership to another person or entity.

Transferor – A Member who transfers Corporation Membership by legal means to another person or entity desiring to qualify for service at a property for which the Membership is currently issued or to the Corporation. (Texas Water Code, Section 67.016)

Usage – Amount billed or to be collected based on the meter reading.

United States Department of Agriculture (USDA) - Through its Rural Development mission area, USDA provides financial resources and support for rural communities, residents, and businesses.

Water Conservation Penalty – A penalty that may be assessed under Section H of this Tariff to enforce customer / member water conservation practices during drought contingency or emergency water demand circumstances. These rates will be based on the water that goes through the meter regardless of the number of units connected. (Texas Water Code Section 67.011 (b)).

SECTION D.
GEOGRAPHIC AREA SERVED

CERTIFICATE OF CONVENIENCE AND NECESSITY (CCN)

To Provide Water Service Under Texas Water Code and
Public Utility Commission Substantive Rules

Certificate No. 10456

1. Certificate Holder:

- i. Name: Kempner Water Supply Corporation
- ii. Address: 11986 East Hwy 190
PO Box 103
Kempner, Texas 76539

2. General Description and Location of Service Area:

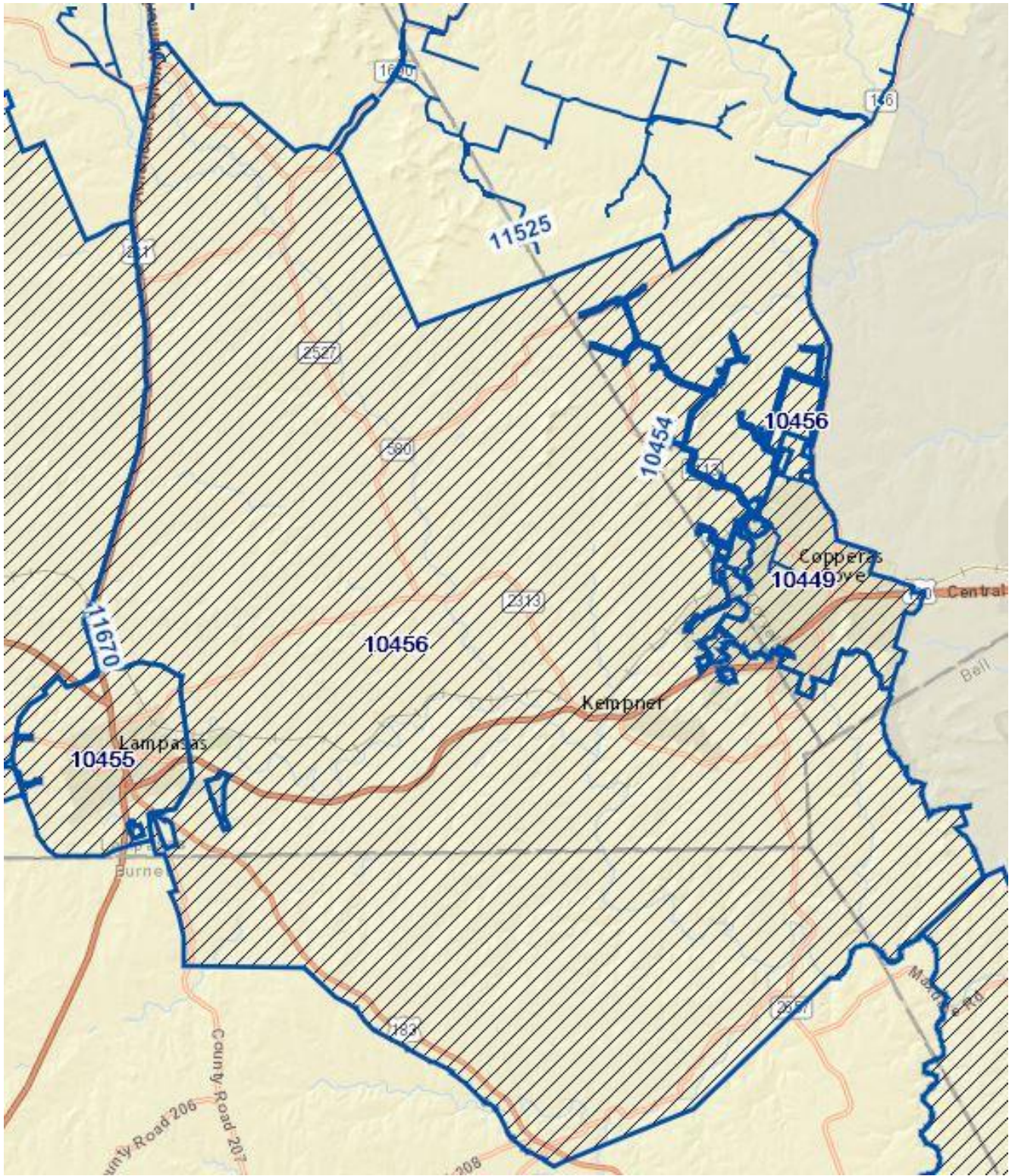
The service area includes portions of Lampasas, Bell, Burnet, and Coryell Counties.

3. Certificate Maps:

The certificate holder is authorized to provide water service in the area identified on the Commission's official service area map, maintained in the offices of the Public Utility Commission, Austin, Texas with all attendant privileges and obligations.

SERVICE AREA MAP

CERTIFICATE OF CONVIENIENCE AND NECESSITY (CCN)



SECTION E.

SERVICE RULES AND REGULATIONS

1. **Service Entitlement** - The Applicant(s) shall be considered qualified and entitled to water utility service when proper application has been made, terms and conditions of Service and Membership have been met and continue to be met, and all fees have been paid as prescribed. (16 TAC 24.85(a))
 - A. A single meter connection is for the sole use of the Member/customer and is to provide service to one unity or business; additionally, units may require an engineering study and must be authorized by KWSC.
 - B. If a member/owner of an undivided tract of land conveys a portion of said tract which contains the meter, the installed meter becomes real property and will only service the tract of land. The remaining tract(s) will not be serviced and the Member prior to transfer of title must obtain an engineering study and comply with the rules and regulations stated in this Tariff.

2. **Service Location and Classification** - For the purposes of this Tariff, service requested by the Applicant(s) shall be for real estate designated to receive the service provided by the Corporation. Service shall be through a meter tap located on that designated real estate unless otherwise approved by the board.
 - A. Standard Service - is defined as service on a specific property designated to receive service on an existing pipeline where pipeline or service facility extensions are not required and special design and/or engineering considerations are not necessary. Typically, this would include 5/8" X 3/4" or 3/4" size water meter services set on existing pipelines.
 - B. Non-Standard Service - is defined as any service request which requires a larger meter service, service to a Master Metered Account or an addition to the supply, storage and/or distribution system. The service requirements, as listed below shall be required of the Non-Standard Service Applicant prior to providing service.

3. **Service Requirements** - The Corporation's Service Application and Agreement Form shall be completed in full and signed by the Applicant(s). Where applicable, in addition to the applicant, any other person sharing ownership, interest in, and receiving service at that property shall sign the Service Application and Agreement Form. However, even if the spouse or other person sharing an ownership interest does not sign the Service Application and Agreement Form, they are still responsible for all terms set forth therein, and for any debt obligation related to the account.

A Right-of-Way Easement Form or another such easement form, required by the Corporation, must be completed by the Applicant for the purpose of allowing future facility additions. (See Sample Application - RUS-TX Bulletin 1780-9 (Rev. 01/09), 30 TAC 290.47 Appendix C.)
NOTE: This requirement may be delayed for Non-Standard Service requests.

 - A. The Applicant shall provide proof of ownership to property for which service has been requested in a manner acceptable to the Corporation. Proof of ownership shall consist of warranty deed, deed of trust, or other recordable documentation of title to the real estate designated to receive service along with survey and field notes. (Texas Water Code Sections 67.016 (e), and 13.002 (11)).
 - B. On the request by the property owner or owner's authorized agent, the Corporation shall install individual meters owned by the Corporation in an apartment house, manufactured home rental community, multiple use facility, or condominium on which construction begins after January 1, 2003, unless the Corporation determines that installation of individual meters is not feasible. If the Corporation determines that installation of meters is not feasible, the property owner or manager shall install a plumbing system that is compatible with the installation of submeters or

individual meters. The Corporation shall be entitled to the payment of costs, including the costs of individual meter installations. The cost of individual meter installation shall be prepaid by the property owner as well as the cost of any additional facilities or supply occasioned by the total water service demand represented by full occupancy of the property. It shall be the responsibility of the property owner to obtain the memberships required for each individual meter.

- C. Notice of application approval and costs of service determined by the Corporation shall be presented to the Applicant in writing and shall remain in effect for a period not to exceed thirty (30) days. After that time the Applicant must re-apply for service. (16TAC 24.81(a)(1))
- D. If the water main has been located in the public right-of-way and is adjacent to Applicant's property due to the current or previous landowner's refusal to grant easement to the Corporation for the purpose of installing the water main and appurtenances, and the Corporation has documentation of such refusal, the Applicant, prior to receiving the requested service, shall grant easement required under this Tariff and in addition to the normally required fees for new customer service, shall pay such sums as are reasonably necessary to cap the existing line in the ROW and construct the appropriate line or lines within that easement for the Corporation's system-wide service.

4. Infrastructure Extension Reimbursement – An approved Applicant may have to pay on a prorated basis an infrastructure reimbursement fee to the Corporation for the purpose of reimbursing a member or other party that made the capital outlay to extend service to that area.

5. Ownership of equipment - All water meters and equipment providing water service to the point of customer connection; water meter or service tap, is the property of the Corporation upon installation, and shall be maintained by the water system only.

6. Activation of Standard Service

- A. New Tap – The Corporation shall charge a non-refundable service installation fee. The service installation fee shall be quoted in writing to the Applicant. Any debt owed to the Corporation and all fees shall be paid, in full, prior to installation. (16 TAC 24.86 (a)(1)(A))
- B. Road Crossing – In the event a road crossing is needed to provide service to property on a gravel road, the cost of equipment, parts and labor is to be paid for by the applicant/member.
- C. Re-Service – On property where service previously existed, the Corporation shall charge the Membership Fee (where the Membership Fee has been liquidated or refunded), reconnection costs, any debt owed to the Corporation if the applicant is the person that previously incurred those charges as appropriate, and other applicable costs necessary to restore service.
- D. Performance of Work – All tap and equipment installations specified by the Corporation shall be completed by the Corporation staff or a designated representative after all application requirements have been met. The tap for a standard service request shall be completed within a reasonable amount of time, usually within 10 business days. This time may be extended for installation of equipment for Non-Standard Service Request.
- E. Inspection of Customer Service Facilities – The property of the Applicant/Member shall be inspected to ensure compliance with state required Minimum Acceptable Operating Practices for Public Drinking Water Systems as promulgated by the Texas Commission on Environmental Quality or successor agency. The customer must, at his or her expense, properly install, inspect, test, maintain and provide all required documentation of any approved backflow prevention device required by the Corporation. (30 TAC 290.46(j); Section I Service Application and Agreement)

7. Activation of Non-Standard Service - Activation of Non-Standard Service shall be conducted as prescribed by the terms of this Tariff.

8. Changes in Service Classification - If at any time the Corporation determines that the customer

service needs have changed from those originally applied for to a different service classification and the Corporation determines that additional or different facilities are necessary to provide adequate service, the Corporation shall require the Applicant/Member to re-apply for service under the terms and conditions of this Tariff. Applicant/Members failing to comply with this provision shall be subject to the Disconnection with Notice Provisions of this Tariff.

9. Membership

- A. Eligibility – Eligibility for Membership shall not guarantee service to the Applicant or Transferee; however, qualification for service is a prerequisite to Membership eligibility for new Applicants or continued Membership for Transferees.
- B. Membership - Upon qualification for service, qualification for Membership, payment of the required fees, and any debt owed to the Corporation, the Corporation shall certify the Applicant as a Member. The Membership shall entitle the Member to one (1) connection to the Corporation's water utility service and one (1) share of Corporation Stock. The Membership entitles the Member to one (1) vote in the election of directors and in such other matters requiring the approval of the Corporation's Members at any Annual or Special Membership Meeting of the Corporation as prescribed by the Corporation Bylaws. Ownership of more than one (1) Membership shall not authorize the Member to cast more than one (1) vote at any annual or special meeting. Each Membership and Stock thereby represented may be assigned to the specified parcel of land originally designated to receive service at the time of application. (Texas Water Code Section 67.016)
- C. Transfers of Membership – (Texas Water Code Section 67.016)
 - 1) A Member is entitled to transfer Membership in the Corporation only under the following circumstances:
 - (a) The Membership is transferred by will to a person related to the Transferor within the second degree by consanguinity; or
 - (b) The Membership is transferred without compensation to a person related to the Transferor within the second degree by consanguinity; or
 - (c) The Membership is transferred without compensation or by sale to the Corporation; or
 - (d) The Membership is transferred as a part of the conveyance of real estate from which the Membership arose.
 - 2) If Membership is transferred, such transfer shall not be completed or recorded on the books and records of the Corporation until such time as the transferor has provided satisfactory evidence to the Corporation of such transfer. A transfer of Membership shall be considered a new application for service and is not binding on the Corporation until such transfer has been approved.
 - 3) Qualifications for service upon transfer of Membership shall be subject to approval of the Corporation and shall be recorded on the books and records of the Corporation only upon the following terms and conditions:
 - (a) The Transferee has completed the required Application Packet including granting the Corporation with a private utility easement on the form provided by the Corporation.
 - (b) The membership has not been fully or partially liquidated; and
 - (c) The Transferee demonstrates satisfactory evidence of ownership of the property designated to receive service and from which the Membership originally arose.
 - 4) If the application packet and other information is not completed on the day transfer of membership is requested the Corporation will give the transferee written notice of 10 additional days to produce completed documentation to the Corporation office. Service will be disconnected on the day following the 10th day according to disconnection with notice

requirements. Additional time may be allowed at the directions of the manager or board.

10. **Cancellation of Membership** – To keep a Membership in good standing, a Base Rate must be paid monthly to the Corporation, regardless of whether water is used. Failure to pay this monthly charge to the Corporation shall jeopardize the Member’s Membership standing and give rise to liquidation of the Membership Fee and forfeiture of the Membership. A Member may be relieved of this obligation to pay by surrendering the Membership, properly documented, to the Corporation. The Member shall also complete a Service Discontinuance Request Form prior to termination of service. However, a member is not relieved of any obligations incurred prior to the date of surrender of a properly endorsed Membership prior to termination of service. Rights to future service at this tap shall be extended on an as-available basis and subject to the terms of the Activation of Service Subsection. (Texas Water Code Section 67.016)
11. **Liquidation Due to Delinquency** – When the amount of the delinquent charges owed by the Member equals the Membership Fee, the Membership Fee shall be liquidated, and the Membership canceled and transferred back to the Corporation. In the event the Member leaves a balance due on an account guaranteed under the terms of a Service Application and Agreement, and the delinquent Member owns more than one Membership, the Corporation may liquidate as many of the Member Guarantor’s Membership Fees as necessary to satisfy the balance due the Corporation, provided proper notice has been given. The Corporation shall collect any remaining account balances by initiation of legal action. Re-instatement of service shall be subject to the terms of the Activation of Service.
12. **Cancellation Due to Policy Non-Compliance** – The Corporation may cancel a Membership anytime a member fails to comply with policies of the Corporation, including but not limited to Member’s failure to provide proof of ownership of the property from which the Membership arose. (Texas Water Code Section 67.016)
13. **Re-assignment of Canceled Membership**
 - A. The Corporation, upon cancellation of Membership under the provisions of this Tariff, may re-assign the canceled Membership to a person or entity that has legal title to the real estate from which the canceled membership arose and for which water service is requested (Texas Water Code Section 67.016). Membership will not be re-assigned unless the person or entity that has legal title to the real estate has complied with the Corporation’s current rates, charges, and conditions of service, including current membership fee, set forth in the Tariff and service application package.
 - B. The Corporation shall reassign a canceled Membership to a person or entity that acquires the real estate from which the Membership arose through judicial or nonjudicial foreclosure. The Corporation will require proof of ownership resulting from the foreclosure and compliance with the Corporation’s current rates, charges, and conditions of service, including current membership fee, set forth in the Tariff and service application package. In the event of foreclosure by a mortgage institution, the Corporation may allow a property management company to acquire the Membership if the management company provides written documentation showing that the management company is legally responsible for the management of the property, and it is not feasible for the mortgage institution to be the Member.
14. **Mortgaging of Memberships** – Nothing herein shall preclude a Member from mortgaging his/her Membership. However, notification to the holder of any security interest (mortgagee/lien-holder) of account status of Member/mortgagor will be provided only upon satisfactory completion of requirements for such conditions under the Membership Mortgage Agreement. Prior to the

cancellation of any Membership the Corporation will notify the holder of any security interest in the Membership. The holder of the security interest also must hold a security interest in the real property at which water service is provided under the Membership. The Corporation may transfer the Membership to the holder of such security interest in lieu of cancellation, provided the holder of the security interest pays in full all delinquent and unpaid obligations and provided further that the holder of the security interest has secured title to the real property from which the Membership arose. The Corporation may withhold cancellation of a Membership pending the resolution of any foreclosure proceedings or similar legal proceedings by the holder of the security interest.

- A. Cancellation and Re-Assignment of Membership as a Result of Bankruptcy Proceedings – Upon notice of the filing of a petition in bankruptcy, the Corporation may require the posting of a deposit or other form of security, acceptable to the Corporation, as a condition for continuing utility service. Unless special circumstances require otherwise, the amount of security shall equal the number of charges for the month of greatest use during the preceding 12 months. The Corporation shall not require the payment of any security prior to the expiration of 20 days following the date on which the petition is filed. Failure to provide this security by the date specified by the Corporation may result in termination of service with a copy of the notice to the bankruptcy Trustee.
- B. Cancellation and Re-Assignment of Membership as a Result of Divorce (or Dissolution of Joint Tenancy) – The Corporation shall transfer the membership to a spouse (or joint tenant) who has been awarded the property designated to receive service. The Corporation must be provided adequate documentation of the ownership rights of the spouse (or joint tenant) requesting transfer, such as final divorce decree, temporary court order, or agreement. In no event shall any membership(s) be transferred if the transferee does not otherwise meet the qualifications for membership and for service.

15. Owners and Renters. Any Member having complied with the requirements of this Tariff, renting, or leasing property designated to receive service according to the terms of this Tariff to other parties, is responsible for all charges due to the Corporation. The membership for rental or leased properties shall be in the name of the owner of the property as required by this Tariff. The Corporation may bill the renter or lessee for utility service (at Member Request) as a third party, but the Member is fully responsible for all unpaid bills left by the renter/lessee. The owner shall be required to sign an Alternate Billing Agreement if the owner requests that the tenant be billed for utility service. The Member shall take responsibility for any necessary deposits from the renter/lessee to ensure payment of a past due bill. The Corporation will notify the Member of the renter's past due payment status. Such notification will be subject to a service charge.

16. Denial of Service – The Corporation may deny service for any of the following reasons:

- A. Failure of the Applicant or Transferee to complete all application requirements, including granting an easement, completing all forms, and paying all required fees and charges, including upgrading membership to current rates.
- B. Failure of the Applicant or Transferee to comply with rules, regulations, policies, and bylaws of the Corporation.
- C. Existence of a hazardous condition at the Applicant's property which would jeopardize the welfare of the Members/Users of the Corporation upon connection.
- D. Failure of Applicant or Transferee to provide representatives or employees of the Corporation reasonable access to property, for which service has been requested.
- E. Failure of Applicant or Transferee to comply with all governmental rules and regulations of the Corporation's Tariff on file with the state regulatory agency governing the service applied for by

the Applicant.

- F. Failure of Applicant or Transferee to provide proof of ownership, to the satisfaction of the Corporation, of property for which the tap has been requested.
 - G. Applicant's service facilities are known to be inadequate or of such character that satisfactory service cannot be provided.
 - H. Failure of the Applicant or Transferee to pay any previous outstanding delinquent account(s). Accounts that are delinquent from the same account location, or other service location(s) within the system where the applicant or transferee received service.
 - I. Failure of the system to provide adequate pressure of 35 PSI as per TCEQ requirements.
- 17. Applicant's or Transferee's Recourse** - In the event the Corporation refuses to serve an Applicant under the provisions of these rules, the Corporation must notify the Applicant, in writing, based on its refusal. The Applicant may file for an appeal, in writing, with the Board of Directors of the Corporation.
- 18. Insufficient Grounds for Refusal of Service** - The following shall not constitute sufficient cause for the refusal of service to an Applicant:
- A. Delinquency in payment for service by a previous member or occupant of the premises to be served.
 - B. Failure to pay a bill to correct previous under billing due to misapplication of rates more than six (6) months prior to the date of application.
 - C. Violation of the Corporation's rules pertaining to operation of non-standard equipment or unauthorized attachments which interferes with the service of others unless the customer has first been notified and been afforded reasonable opportunity to comply with said requirements.
 - D. Failure to pay a bill of another member or customer as guarantor thereof unless the guarantee was made in writing to the Corporation as a condition precedent to service.
 - E. Failure to pay the bill of another member or customer at the same address except where the change of customer identity is made to avoid or evade payment of a utility bill.
- 19. Deferred Payment Agreement** - The Corporation may offer a deferred payment plan to a Member or rental tenant who cannot pay an outstanding balance in full and is willing to pay the balance in reasonable installments as determined by the Corporation, including any Late Penalty Fees or interest on the monthly balance to be determined as per agreement. Failure to make required and timely payments as provided in any deferred payment agreement will void that agreement and service will be discontinued. Non-payment of any amount under an additional deferred payment agreement will cause service to be disconnected immediately, and service will not be restored until the account is paid in full and all other charges resulting from the disconnection of service are fully paid. In the event the requestor is a tenant of rental property the Corporation shall notify the owner/member of the deferred payment agreement.
- 20. Charge Distribution and Payment Application**
- A. The Base Rate -- The monthly charge for metered water service, which may or may not include allowable Water Usage Charge, is based on demand by meter size. Each charge is assessed based on the number of 3/4" meters (as per American Water Works Association) maximum continuous flow specifications equivalent to the size indicated and is used as a base multiplier for the Service Availability Charge and allowable Water Usage Charge. Rates and equivalents are as follows:

3/4" METER		
METER SIZE	METER EQUIVALENTS	MONTHLY RATE
3/4"	1.0	\$80.00
1"	2.5	\$200.00
1 1/2"	5.0	\$400.00
2"	8.0	\$640.00
3"	10.0	\$800.00

Larger meters based on meter equivalents.

- B. Charges shall be prorated for meter installations and service termination's falling during the billing period. Billings for this amount shall be mailed on or about the last day of the month preceding the month for which this charge is due. All services shall be subject to this charge whether or not the service is in use by the Member.
- C. Gallonage Charge - shall be billed at the rate specified in Section G and billing shall be calculated in one thousand (1000) gallon increments. Water charges are based on monthly meter readings and are calculated from reading date to reading date. Readings used in all billing calculations shall be taken by the Corporation's employees or a designated representative.
- D. Posting of Payments – All payments shall be posted against previous balances and late fees prior to posting against current billings.
- E. Forms of Payment - The Corporation will accept the following forms of payment: cash, personal check, cashier's check, money order, automatic debit on customer's bank account, or draft on bank and online payments. The Corporation will not accept two-party checks, pay checks, or any other instrument of payment that is not made out to the Corporation.

21. Due Dates, Delinquent Bills, and Service Disconnection Date

- A. The Corporation shall mail all bills on or about the last day of the month. All bills are considered the responsibility of each person signing the Service Application and Agreement Form. All bills shall be due and payable upon receipt and are past due beyond the date indicated on the bill (allowing approximately fifteen (15) days to pay), after which time a penalty shall be applied. A bill is delinquent if not paid on or before the past due date. Final notices are mailed out the next working day after the 15th and include a late payment charge. Final bills are due by the 25th to avoid service disconnection and additional disconnect and reconnect fees.
- B. The board of directors or general manager may elect to not charge a late fee or disconnect fee in accordance with this Tariff during or after the occurrence of a natural disaster or other incident that impacts the property of members or interrupts the management and operation of the system.
- C. Upon written request, any residential customer 65 years of age or older who occupies the entire premises of a dwelling receiving water utility service from the Corporation shall receive extension of the past due date, without penalty. The extension shall not exceed 10 days beyond the usual 15-day payment period for a total of no more than 25 days from the date the bill is issued. The request may specify extension of the late payment periods for current and subsequent billings. (Texas Utilities Code Sections 182.001 - 182.005) If this request originates from a tenant at a rental property the owner / member will be notified in writing of any extension request.
- D. All insufficient fund checks, accounts closed, or money orders that have had a "stop payment order" issued for payment of a water bill will be deemed delinquent as if no payment was received and the meter is subject to disconnection with notice on the regular disconnection day.

- 22. Rules for Disconnection of Service** - The following describe the rules and conditions for disconnection of service. Notwithstanding any language to the contrary in the Service Application and Agreement Form, the Corporation may only discontinue service for the reasons outlined in this Section.
- A. Disconnection with Notice – Water utility service may be disconnected for any of the following reasons after proper notification has been given.
- 1) Returned Checks- The Corporation shall mail, via the U.S. Postal Service, a notice requiring redemption of the returned instrument within ten (10) days of the date of the notice to be made in the Corporation’s office.
 - 2) Redemption of the returned instrument shall be made by cash, money order, or certified check. Failure to meet these terms shall initiate disconnection of service. Any such instruments returned as insufficient or non-negotiable for any reason for any two billing periods within a 12-month period shall be considered evidence of bad credit risk by the Corporation. The Member/Customer in violation shall be placed on a “cash-only” basis for 12 months. NOTE: “cash only,” means certified check, money order, or cash.
 - 3) Failure to pay a delinquent account for utility service, failure to timely provide a deposit or other security, or failure to comply with the terms of a deferred payment agreement.
 - 4) Violation of the Corporation’s rules about the use of service in a manner which interferes with the service of others or the operation of non-standard equipment if a reasonable attempt has been made to notify the Member and the Member is provided with a reasonable opportunity to remedy the situation.
 - 5) Failure of the Member to comply with the terms of the Corporation’s Service Agreement, Tariff, Bylaws, or Special Contract provided that the Corporation has given notice of said failure to comply, and Member has failed to comply within a specified amount of time after notification.
 - 6) Failure to provide access or to hinder access to the meter under the terms of this Tariff or to property at which water service is received when there is a reason to believe that a hazardous condition or policy violation exists for which access is necessary to verify. Any condition that may hinder access includes, but are not limited to, fences with locked gates, vehicles or objects placed on top of meters or meter boxes, and unrestrained animals.
 - 7) Misrepresentation by any Applicant or Transferee of any fact on any form, document, or other agreement required to be executed by the Corporation.
 - 8) Failure of Member to reapply for service upon notification by the Corporation that Member no longer meets the terms of the service classification originally applied for under the original service application.
 - 9) Cancellation of membership by Member on an account that the Member holds for water service to the Member’s renter/lessee, even if the renter/lessee has kept the account balance current under an Alternate Billing Agreement. (Note: The cancellation of membership must be in writing and signed by the Member. CORPORATION ASSUMES NO LIABILITY TO RENTER/LESSEE; MEMBER IS SOLELY RESPONSIBLE FOR COMPLIANCE WITH, AND LIABILITY UNDER ANY FEDERAL, STATE OR LOCAL LAW CREATING OR PROTECTING RIGHTS OF RENTERS/LESSEES.)
 - 10) Failure to pay charges arising from a service trip fee.
 - 11) Failure by a Member to pay for all repair or replacement costs resulting from the Member damaging system facilities including, but not limited to, water lines, service taps, meter boxes, valves, or meters by engaging in activities such as property exactions, installment of a driveway or roadway requiring encasements, lowering or re-routing of lines or system components, or by any other action. The Corporation will provide the Member/Customer

with notice detailing the extent of the damage, the location of the damage, the cost of repair, and whether the damage occurred on private property or on a public right-of-way. Failure to pay the cost of repair or replacement will result in the customer/member's service being disconnected in accordance with the disconnection with notice provisions in the Section. Service will remain disconnected until payment is received, or an acceptable payment plan is approved.

- 12) Failure to disconnect or secure additional service tap(s) for an RV or other service connection after notification by the Corporation of violation of the Prohibition of Multiple Connections.

B. Disconnection Without Notice – Water utility service may be disconnected without notice for any of the following conditions:

- 1) A known dangerous or hazardous condition exists for which service may remain disconnected for as long as the condition exists, including but not limited to, a public health nuisance as defined in Texas Health and Safety Code Sections 341.011 or 343.011. If there is reason to believe a dangerous or hazardous condition exists, the Corporation may conduct a Customer Service Inspection (CSI) to verify the hazardous condition and may notify the local county health office. The Corporation will disconnect without notice if the Member refuses to allow access for the purpose of confirming the existence of such condition and/or removing the dangerous or hazardous condition (30 TAC 290.46(i) and 290.46(j)). Service will be restored when a CSI confirms no health hazard exists, the health hazard has been removed or repaired, or the health hazard has been isolated from the Corporation's water system by the installation of a backflow prevention device.
- 2) A line leak on the member's side of the meter is considered a potentially hazardous condition. If the Corporation conducts a Customer Service Inspection (CSI) and discovers that the line leak has created a hazardous condition, the Corporation will provide the member up to five (5) business days, or another time determined reasonable under the circumstances, to repair the line prior to disconnection of service.
- 3) Service is connected without authority by a person who has not made application for service or who has reconnected service without authority following termination of service for nonpayment; and
- 4) In instances of tampering with the Corporation's meter tap or equipment, by-passing the meter or equipment, or other diversion of water service.

NOTE: Where reasonable, given the nature of the reason for disconnection, a written statement providing notice of disconnection and the reason therefore shall be posted at the place of common entry or upon the front door of each affected residential unit as soon as possible after service has been disconnected.

- 5) Payment with insufficient funds check within two (2) days before lock day will be locked without notice.

C. Disconnection Prohibited – Utility service may not be disconnected for any of the following reasons:

- 1) Failure of the Member to pay for merchandise or charges for non-utility service provided by the Corporation unless an agreement exists between the Applicant and the Corporation whereby the Member guarantees payment of non-utility service as a condition of service.
- 2) Failure of the Member to pay for a different type or class of utility service unless a fee for such service is included in the same bill.
- 3) Failure of the Member to pay charges arising from an under billing occurring due to any misapplication of rates more than six (6) months prior to the current billing.
- 4) Failure of the Member to pay the account of another Member as guarantor thereof unless the

Corporation has in writing the guarantee as a condition precedent to service.

- 5) Failure of the Member to pay charges arising from an under billing due to any faulty metering unless the meter has been tampered with or unless such under-billing charges are due under the Inoperative Meters section of this Tariff.
 - 6) Failure of the Member to pay estimated bill other than a bill rendered pursuant to an approved meter reading plan unless the Corporation is unable to read the meter due to circumstances beyond its control.
- D. Disconnection on Holidays and Weekends – Unless a dangerous condition exists or the Member requests disconnection, service shall not be disconnected on a day, or on a day preceding a day when personnel of the Corporation are not available to the public for the purpose of making collections and reconnecting service.
- E. Disconnection Due to Utility Abandonment – The Corporation may not abandon a member or a Certificated Service Area without written notice to its Members and all similar neighboring utilities and approval from the PUC.
- F. Disconnection for Ill Customers – The Corporation may not discontinue service to a delinquent residential Member or tenant, under an alternative billing agreement, permanently residing in an individually metered dwelling unit. The member or tenant must establish that discontinuance of service will result in some person at that residence becoming seriously ill or more seriously ill if service is discontinued. To avoid disconnection under these circumstances, the Member or tenant must provide a written statement from a physician to the Corporation before the stated date of disconnection. Service may be disconnected if the next month’s bill and the past due bill are not paid by the due date of the next month’s bill unless the Member or tenant enters a Deferred Payment Plan. The Corporation shall provide notice to an owner of rental property in the event a tenant requests service not be discontinued due to illness as per this subsection.
- G. Disconnection of Master-Metered Accounts – When a bill for water utility services is delinquent for a master-metered service complex (defined as a complex in which a single meter serves two (2) or more residential dwelling units), the following shall apply:
- 1) The Corporation shall send a notice to the Member as required. This notice shall also inform the Member that notice of possible disconnection will be provided to the tenants of the service complex in five (5) days if payment is not rendered before that time.
 - 2) At least five (5) days after providing notice to the Member and at least five (5) days prior to disconnection, the Corporation shall post notices, stating “Termination Notice” in public areas of the service complex notifying the residents of the scheduled date for disconnection of service.
 - 3) The tenants may pay the Corporation for any delinquent bill on behalf of the owner to avert disconnection or to reconnect service to the complex.
- 23. Billing Cycle Changes** - The Corporation reserves the right to change its billing cycles if the workload requires such practice. After the billing period has been changed, the billings shall be sent on the new change date unless otherwise determined by the Corporation.
- 24. Back-Billing** - The Corporation may back-bill a Member for up to four (4) years (48 months) for meter error, misapplied meter multiplier, incorrect meter readings, or error in computing a Member’s bill. Failure to pay the most recent six (6) months billing will result in disconnection of service.
- 25. Disputed Bills** - In the event of a dispute between the Member and the Corporation regarding any bill, the Corporation shall make and conduct an investigation as required by the particular case and report the results in writing thereof to the Member. All disputes under this Subsection must be

submitted to the Corporation, in writing, prior to the due date posted on said bill.

- 26. Inoperative Meters** - Water meters found inoperative will be repaired or replaced within a reasonable time. If a meter is found not to register for any period, unless bypassed or tampered with, the Corporation shall make a charge for units used, but not metered, for a period not to exceed six (6) months. The charge will be based on amounts used under similar conditions during the period preceding or subsequent thereto, or during corresponding periods in previous years.
- 27. Bill Adjustment**
- A. Due to Meter Error - The Corporation shall test any Member's meter upon written request of the Member. In the event the meter tests accurately, a test fee shall be imposed. In the event the test results indicate that the meter is faulty or inaccurate, the test fee shall be waived, the meter shall be calibrated or replaced, and a billing adjustment may be made as far back as six (6) months. The billing adjustment shall be made to the degree of the meter's inaccuracy as determined by the test.
 - B. Due to Estimated Billing - If the Corporation has estimated usage because the Corporation is unable to access the meter due to circumstances beyond the Corporation's control, such as a natural disaster; or because access is hindered or denied by a Member, the Corporation shall adjust the bill once access has been regained and actual usage is determined.
- 28. Meter Tampering and Damage to Property**
- For purposes of this Section, the term "Tampering" shall mean meter-tampering, by-passing, or diversion of the Corporation's service equipment, or other instances of diversion, including:
- A. Removing a locking or shut-off devise used by the Corporation to discontinue service,
 - B. Physically disorienting the meter tap,
 - C. Attaching objects to the meter tap to divert service or to by-pass,
 - D. Inserting objects into the meter tap,
 - E. Other electrical and mechanical means of tampering with, by-passing, or diverting service,
 - F. Connection or reconnection of service without Corporation authorization,
 - G. Connection into the service line of adjacent customers of the Corporation
 - H. The burden of proof of Tampering is on the Corporation - Photographic evidence or any other reliable and credible evidence may be used; however, any evidence shall be accompanied by a sworn affidavit by the Corporation's staff when any action regarding Tampering is initiated. A court finding of Tampering may be used instead of photographic or other evidence, if applicable. Unauthorized users of services of the Corporation shall be prosecuted to the extent allowed by law under the Texas Penal Code Sections 28.03 and 12.21 and 12.22.
 - I. If the Corporation determines that Tampering has occurred, the Corporation shall disconnect service without notice and charge the person who committed the Tampering the total actual loss to the Corporation, including the cost of repairs, replacement of damaged facilities, and lost water revenues.
 - J. A person who otherwise destroys, defaces, damages, or interferes with Corporation property will be charged the total actual loss to the Corporation, including but not limited to, the cost of repairs, replacement of damaged facilities, and lost water revenues. The Corporation also will prosecute the offending party to the extent allowed under law pursuant to Texas Water Code Section 49.228 and other applicable laws.
 - K. In addition to actual damages charged under subsection (B), the Corporation may assess a penalty against the offending party. The penalty shall not exceed six (6) times the Base Rate.

Note: For purposes of this section, “offending party” means the person who committed the Tampering or damaged the property.

29. **Meter Relocation** - Relocation of services shall be allowed by the Corporation provided that:
- A. The relocation is limited to the existing property designated to receive service.
 - B. Service capacity is available at the proposed location.
 - C. A current easement for the proposed location has been granted to the Corporation; and
 - D. The Member pays the actual cost of relocation plus administrative fees.

30. **Prohibition of Multiple Connections to a Single Tap**

- A. No more than one (1) residential, commercial, or industrial service connection is allowed per meter. The Corporation may consider allowing an apartment building or mobile home park to apply as a “Master Metered Account” and have a single meter. If the Corporation has sufficient reason to believe a Multiple Connection exists, the Corporation shall discontinue service under the Disconnection with Notice provisions of this Tariff for a first violation and for subsequent violations, service will be disconnected without notice.
- B. For purposes of this section, the following definitions shall apply:
 - 1) A “multiple connection” is the connection to any portion of a member’s water system that is connected to a primary delivery point already servicing one residence, one commercial or industrial facility of a water line serving another residence or commercial or industrial facility. Water lines to outbuildings, barns or other accessory structures shall not be considered a multiple connection if: (i) those structures are located on the same tract as the primary delivery point and (ii) such structures are not used as a residence or as a commercial or industrial facility.
 - 2) A “primary delivery point” (30.B.1 above) shall mean the physical location of a meter tap that is installed, and which provides water service to the residence or commercial or industrial facility of a member.
 - 3) A “residence” shall mean any structure which is being used for human habitation, which may include kitchen and bathroom facilities, or other evidence of habitation as defined by the Corporation.
 - 4) “Commercial” facility shall mean any structure or combination of structures at which any business, trade, occupation, profession, or other commercial activity is conducted. Business conducted within a member’s residence or property that does not require water in addition to that provided to the member’s residence shall not be considered a separate commercial facility.
- C. The Corporation agrees to allow members in good standing to share water usage with a visitor on their property with a recreation vehicle (RV) or travel trailer for a period of no longer than three months. If the recreation vehicle/travel trailer is being used for a permanent residence, this Tariff requires that an additional meter installation and membership be purchased. If the member routinely has more than one visitor at a time with recreation vehicles or travel trailers or has multiple visitors throughout the year, the Corporation may require that a second or additional meter(s) be purchased. The member must submit a written request to the Corporation’s business office at least five (5) business days prior to sharing Corporation water with a visitor. The Corporation has the right to refuse or deny the shared usage for any reason. The Corporation also has the right to inspect the premises for any potential cross-contamination issues as outlined in the Customer Service Inspection requirements and to ensure that the meter is properly sized for the additional usage at the time of total peak water demand. These requirements pertain to visitors ONLY. No commercial usage where fees for water are charged is allowed. If a member is found to violate these conditions, the member will be sent a letter of notice stating that water service will be cut off in ten days if the situation is not corrected.

31. Master Metered Account Regulations - An apartment building, condominium, manufactured housing (modular, mobile) community, business center or other similar type enterprise may be considered by the Corporation to be a single commercial facility if the owner applies for a meter as a “master metered account” and complies with the requirements set forth in PUC rules, this Tariff and applicable law. The Corporation may allow master metering to these facilities at an Applicant’s request. Note: All Master Meter Accounts must have an RPZ installed and tested at installation and annually thereafter, on member side of the meter. RPZ inspection reports must be received in the KWSC office within 10 days of testing or account will be subject to disconnection.

32. Member’s Responsibility

- A. The Member shall provide access to the meter tap location as per the easement and service agreement. If access to the meter is hindered or denied, preventing the reading of the meter, an estimated bill shall be rendered to the Member for the month; and a notice shall be sent to the effect that access could not be gained. If access is denied for three (3) consecutive months after proper notification to the Member, then service shall be discontinued, and the meter removed with no further notice. Conditions that may hinder access include, but are not limited to, fences with locked gates, vehicles or objects placed on top of meters or meter boxes, and unrestrained animals.
- B. The Member shall be responsible for compliance with all utility, local, and state codes, requirements, and regulations concerning on-site service and plumbing facilities.
 - 1) All water connections shall be designed to ensure against on-site sewage contamination, back-flow, or siphonage into the Corporation’s water supply. In particular, livestock water troughs shall be plumbed above the top of the trough with air space between the discharge and the water level in the trough. (30 TAC 290.46, Texas Health & Safety Code Chapter 366)
 - 2) The use of pipe and pipe fittings that contain more than 0.25% lead or solder and flux that contain more than 0.2% lead is prohibited for any plumbing installation or repair of any residential or non-residential facility providing water for human consumption and connected to the Corporation’s facilities.
 - 3) All sewer and potable water service pipeline installations must be a minimum of nine feet apart and meet all applicable plumbing standards for crossings, etc.
 - 4) Requirements for Traps:
 - (a) Discharges requiring a trap include but are not limited to:
 - 1) grease or waste containing grease in amounts that will impede or stop the flow in the public sewers.
 - 2) oil, flammable waste.
 - 3) sand, and other harmful ingredients.
 - (b) Any person responsible for discharges requiring a trap shall, at his own expense, and as required by the approving authority:
 - 1) Provide equipment and facilities of a type and capacity approved by the approving authority.
 - 2) locate the trap in a manner that provides ready and easy accessibility for cleaning and inspection; and
 - 3) maintain the trap in effective operating condition.
 - (c) Approving Authority Review and Approval (By the Board of Directors or Agency):
 - 1) If pretreatment or control is required, the approving authority shall review and approve design and installation of equipment and processes.
 - 2) The design and installation of equipment and processes must conform to all

applicable statutes, codes, ordinances, and other laws.

- 3) Any person responsible for discharges requiring pretreatment, flow equalizing, or other facilities shall provide and maintain the facilities in effective operating condition at his own expense.
 - 4) Service shall be discontinued without further notice when installations of new facilities or repair of existing facilities are found to be in violation of this regulation until such time as the violation is corrected.
- C. A Member owning more than one (1) Membership shall keep all payments current on all accounts. Failure to maintain status on all accounts shall be enforceable as per Service Application and Agreement executed by the Member.
 - D. The Corporation's ownership and maintenance responsibility of water supply and metering equipment shall end at the meter. Any registering water usage, water leaks or damages incurred on the member/customer side of meter shall be the member/customer's responsibility.
 - E. The Corporation shall require each Member to install a cut-off valve within two feet of the meter on the Member's side of the meter for purposes of isolating the Member's service pipeline and plumbing facilities from the Corporation's water pressure. The valve shall meet AWWA standards (a ball valve is preferred). The Member's use of the Corporation curb stops or other similar valve for such purposes is prohibited. Any damage to the Corporation equipment shall be subject to service charges.
 - F. If the water pressure at your property is 80 pounds per square inch (psi) or greater, a pressure reducing valve (PRV) will help decrease the water pressure. Property owners and/or customers are responsible for installing and maintaining their own individual PRV devices whenever the static water pressure exceeds 80 psi. PRV's will not increase water pressure to a property; however, they do serve as a critical component to decrease water pressure to your level of preference. Most plumbing professionals recommend a PRV setting between 35 and 60 psi. High Water Pressure Can Damage Plumbing. Sustained pressure that exceeds 80 psi can damage on-site plumbing systems and may affect your water fixtures. PRVs should be installed on the customer's side of the water meter and are usually located near the water heater, water softener or on the inlet water line between your home and the water meter. If your home water system does not have a PRV, you can purchase them from a licensed plumber, who can install the PRV. If a PRV already exists, it may just need an adjustment to decrease the pressure on the property. KWSC recommends that you consult a licensed plumber for adjustments and service to your PRV. (Texas Building Code #604.8 Water Pressure-Reducing Valve or Regulator: Where water pressure within a building exceeds 80 psi (552 kPa) static, an approved water pressure-reducing valve conforming to ASSE 1003 or CSA B356 with strainer shall be installed to reduce the pressure in the building's water distribution piping to not greater than 80 psi (552 kPa static.)
 - G. The member is required to notify the system 48 hours prior to digging or excavation activities along or near water lines and appurtenances.
 - H. All line extensions or new lines, whether by customer request for service, developer request for service, or by the Corporation shall be a minimum of 4" in diameter unless waived by the Corporation. The costs for the installation of the pipe shall be borne entirely by the party requesting service from the line extension unless waived by the Corporation.
 - I. All livestock troughs must have an airgap or RPZ and are subject to inspection.
 - J. Members, property owners, and customers are responsible for installing and maintaining their own individual thermal expansion control tanks on the cold water supply line near their water heaters. Thermal expansion tanks serve as a critical component to decrease the risk of damage to plumbing when pressure is lost on the Corporation's side of the water meter, whether as a result of a leak, repair or maintenance, or flushing of the water main. Thermal expansion tanks are required

by plumbing codes, where applicable. For example, Where a storage water heater is supplied with cold water that passes through a check valve, pressure reducing valve or backflow preventer, a thermal expansion control device shall be connected to the water heater cold water supply pipe at a point that is downstream of all check valves, pressure reducing valves and backflow preventers. Thermal expansion tanks shall be sized in accordance with the tank manufacturer's instructions and shall be sized such that the pressure in the water distribution system shall not exceed that required by Section 604.8.

K. Lot size must be appropriate for septic system per county regulations unless sewer is available.

SECTION F.
DEVELOPER, SUBDIVISION AND
NON-STANDARD SERVICE REQUIREMENTS

PART I. General Requirements

This section details the requirements for all types of non-standard service requests.

Prior to construction of the facilities, the following minimum considerations should be considered:

- Non-Standard Service Contract between KWSC and the developer
- Qualification and selection process for the developer's construction contractor
- Performance and Payment bond requirements
- Inspection and testing of the facilities.
- Acceptance for operation and maintenance
- As-built construction plans
- Warranty period following acceptance of the facilities.

- 1. Purpose** - It is the purpose of this Section to define the process by which the specific terms and conditions of service to subdivisions and other kinds of Non-Standard Service are determined, including the Non-Standard Service Applicant's and the Corporation's respective costs.

For purposes of the Section, the term "Applicant" shall refer to the individual or entity that desires to secure Non-Standard Service from the Corporation. The Applicant must be the same person or entity that is authorized to enter a contract with the Corporation setting forth the terms and conditions pursuant to which Non-Standard Service will be furnished to the property. In most cases, the Applicant shall be the owner of real property for which Non-Standard Service is sought. In the event that the Applicant is other than the owner of real property, the Applicant must furnish evidence to the Corporation that it is authorized to request a Non-Standard Service on behalf of such owner, or that it otherwise has authority to request a Non-Standard Service for the real property.

- 2. Application of Rules** - This Section is applicable to subdivisions, additions to subdivisions, developments, or whenever additional service facilities are required for a single tract of property. Examples of non-standard services for a single tract of land can include, but are not limited to, road bores, extensions to the distribution system, service lines exceeding 3/4" diameter and service lines exceeding 50 feet. Nonresidential or residential service applications requiring a larger sized meter typically will be considered non-standard. For the purposes of this Tariff, Applications subject to this Section shall be defined as nonstandard. This Section may be altered or suspended for planned facility expansions when the Corporation extends its indebtedness. The Board of Directors of the Corporation or their designee shall interpret on an individual basis whether the Applicant's service request shall be subject to all or part of the conditions of this Section.

This Section sets forth the general terms and conditions pursuant to which the Corporation will process Non-Standard Service Requests. The specific terms and conditions pursuant to which the Corporation will provide non-standard service in response to any request will depend upon the nature of such request and may be set forth in a legally enforceable, contractual agreement to be entered into by the Corporation and the service Applicant. The agreement may not contain any terms or conditions that conflict with this Section.

- 3. Nonstandard Service Application** - The Applicant shall meet the following requirements prior to the initiation of a Non-Standard Service Contract by the Corporation:

- A. The Applicant shall provide the Corporation a completed Non-Standard Service Application. The Applicant shall specify any Special Service Needs, such as large meter size, size of subdivision or multi-use facility.
- B. A Final Plat (see Tariff Definition Section- Final Plat) approved by the Corporation must accompany the Application showing the Applicant requested service area. The plat must be approved by all governmental authorities exercising jurisdiction over lot sizes, sewage control, drainage, right-of-way, and other service facilities. Plans, specifications, and special requirements of such governmental authorities shall be submitted with the plat. Applicants for single taps involving extension or upsizing of facilities shall be required to submit maps or plans detailing the location of the requested extension and details of demand requirements.

NOTE: It is the responsibility of the Applicant to secure all necessary approvals of the subdivision once an Agreement is in place between the Corporation and the Applicant.

- C. A Non-Standard Service Investigation Fee shall be paid to the Corporation in accordance with the requirements of Section G of this Tariff for purposes of paying initial administrative, legal, and engineering fees. The Corporation shall refund any balance that remains after it has completed its service investigation and has completed all legal and engineering services associated with processing a request. In the event such a fee is not sufficient to pay all expenses incurred by the Corporation, the Applicant shall pay to the Corporation upon the Corporation's request all additional expenses that have been or will be incurred by the Corporation and Corporation shall have no obligation to complete processing of the Application until all remaining expenses have been paid.
- D. If after the service investigation has been completed, the Corporation determines that the Applicant's service request is for property located, in whole or in part, outside the area described in the Corporation's Certificate of Convenience and Necessity, service may be extended provided that:
 - 1) The service location is not in an area receiving similar services from another retail corporation.
 - 2) The service location is not within another retail Corporation's Certificate of Convenience and Necessity; and
 - 3) The Corporation's Certificate of Convenience and Necessity shall be amended to include the entirety of the Applicant's property for which service is requested. The applicant shall pay all costs incurred by the Corporation in amending its CCN, including but not limited to, engineering and professional fees. If the service location is contiguous to or within one-fourth (1/4) mile of the Corporation's Certificate of Convenience and Necessity, the Corporation may extend service prior to completing the amendment to its CCN but will do so only upon Applicant's legally enforceable agreement to fully support such amendment (including but not limited to payment of all professional fees, including legal, surveying, and engineering fees incurred by the Corporation in securing the amendment).

- 4. **Design** - The Corporation shall approve the design requirements of the Applicant's required facility prior to initiation of a Non-Standard Service Contract in accordance with the following schedule:
 - A. The Corporation's engineer shall review and approve plans for, all on-site and off-site service facilities for the Applicant's requested service within the Corporation's specifications, incorporating any applicable municipal or other governmental codes and specifications.
 - B. The engineer's fees shall be paid out of the Non-Standard Service Investigation Fee.
 - C. The Applicant shall submit to the Corporation a set of detailed plans, specifications, and cost estimates for the project, as stated in Section F, Part III – Construction.

- D. The Corporation's engineer shall ensure that all facilities for any Applicant meet the demand for services as platted and/or requested in the plans or plat submitted an application for service. The Corporation reserves the right to upgrade the design of service facilities to meet future demands provided, however, that the Corporation shall pay the expense of such upgrading in excess of that which is reasonably allocable to the level and manner of service requested by the Applicant.
 - E. The Corporation's engineer will determine the fire flow design for any non-standard service request, including new subdivisions, based on density, type of structure, and other factors.
- 5. Nonstandard Service Contract** - Applicants requesting or requiring Non-Standard Service will be required to execute a written contract. In addition to submitting the Corporation's Non-Standard Service Application. Said contract shall define the terms of service prior to construction of required service facilities. The service contract may include, but is not limited to:
- A. All costs associated with required administration, design, construction, and inspection of facilities for water service to the Applicant's service area and terms by which these costs are to be paid.
 - B. Procedures by which the Applicant shall accept or deny a contractor's bid, thereby committing to continue or discontinue the project.
 - C. The terms by which service capacity shall be reserved for the Applicant and duration of reserved service with respect to the demand which the level and manner of the service will have upon the Corporation's system facilities.
 - D. The terms by which the Applicant shall be reimbursed or compensated for fees duplicated in assessments for monthly rates and Equity Buy-In Fees.
 - E. The terms by which the Corporation shall administer the Applicant's project with respect to:
 - 1. Design of the Applicant's service facilities.
 - 2. Execution of the Service Contract.
 - 3. Selection of a qualified bidder for construction.
 - 4. Dispensing advanced funds for construction of facilities required for the Applicant's service.
 - 5. Inspecting construction of facilities; and
 - 6. Testing facilities and closing the project.
 - F. The terms by which the Applicant shall indemnify the Corporation from all third-party claims or lawsuits in connection with the project.
 - G. The terms by which the Applicant shall dedicate, assign, and convey to the Corporation all constructed facilities and related rights (including contracts, easements, rights-of-way, deeds, warranties, and so forth) by which the Corporation shall assume operation and maintenance responsibility for the Applicant's project. The Applicant shall also provide reproducible as-built drawings of all constructed facilities. The as-built drawings must verify that all facilities have been properly located within the easements conveyed to the Corporation.
- 6. Construction of Facilities by Applicant Prior to Execution of Service Contract** – The Corporation and the Applicant must execute a Non-Standard Service Contract prior to the purchase of supplies and materials or initiation of construction of facilities by the Applicant. In the event that the Applicant commences construction of any such facilities prior to execution of a Contract with the Corporation, then the Corporation may refuse to provide service to the Applicant or, in a subdivision, to any person purchasing a lot or home from the Applicant. Alternatively, the Corporation may require full costs of replacing/repairing any facilities constructed without the prior execution of a contract from any person buying a lot or a home from the Applicant. At a minimum, the Corporation will require that all facilities be uncovered by the Applicant for inspection by the Corporation, require that any facilities not approved by the Corporation be replaced, and take any other lawful action determined appropriate by the Board of Directors of the Corporation.

7. Dedication of Water System Extension to Corporation

- A. Upon proper completion of construction of all on-site and off-site service facilities to meet the level and manner of service requested by the Applicant (the “Facilities”), the Facilities shall become the property of the Corporation. The Facilities shall thereafter be owned and maintained by the Corporation subject to the warranties required of the Applicant under Subsection (b). Any connection of individual customers to the Facilities shall be made by the Corporation.
- B. Upon transfer of ownership of the Facilities, Applicant shall warrant materials and performance of the Facilities constructed by Applicant for 12 months following the date of the transfer.

8. Property and Right-of-Way Acquisition – With regard to construction of facilities, the Corporation shall require private right-of-way easements or purchase of private property as per the following conditions: If the Corporation determines that right-of-way easements or facility sites outside the Applicant’s property are required, the Applicant shall secure easements or else title to facility sites on behalf of the Corporation. All right-of-way easements and property titles shall be researched, validated, and filed by the Corporation at the expense of the Applicant.

- A. All additional costs associated with facilities that must be installed in public rights-of-way on behalf of the Applicant, due to the inability of the Applicant to secure private right-of-way easements, such as including road bores and TxDOT approvals shall be paid by the Applicant. Alternatively, the Applicant shall pay all costs, including legal and other professional fees and the condemnation award in the event corporation secures such private easements or facility sites through eminent domain proceedings.
- B. The Corporation shall require an exclusive dedicated right-of-way easement on the Applicant’s property (as required by the size of the planned facilities and as determined by the Corporation) and title to the property required for other on-site and off-site facilities.
- C. Easements and facility sites shall be prepared for the construction of the Corporation’s pipelines and facility installations in accordance with the Corporation’s requirements and at the expense of the Applicant.

9. Two (2) Business Days’ Notice - The Corporation shall be contacted two (2) business days prior to:

- A. Pre-construction meetings.
- B. All connections to existing facilities.
- C. Beginning each phase of construction.
- D. Testing of water pipelines; and,
- E. Final walk-through of facilities.

10. Insurance, Performance and Payment Bonds

- A. The Contractor shall provide adequate certificates of insurance to include workman’s compensation coverage as required by the Corporation.
- B. The Contractor shall secure adequate performance and payment bonding for the project under terms acceptable to the Corporation.
- C. The Contractor shall qualify with the Corporation as competent to complete the work (including but not limited to current water license, OSHA competent person training, and other licenses /certificates as required to complete the project).

11. Prepayment for Construction and Service – After the Applicant has executed the Service Agreement, the Applicant shall pay to the Corporation all costs necessary for completion of the project prior to construction and in accordance with the terms of the Non-Standard Service Contract.

Construction

- A. All roadwork pursuant to state, county and/or municipal standards (as applicable) shall be completed prior to facility construction to avoid future problems resulting from road right-of-way

completion and excavation. Subject to approval of the requisite authority, approved road sleeves /casings may be installed prior to road construction to avoid road damage during construction of Applicant's facilities.

- B. The Corporation shall, at the expense of the Applicant, inspect the facilities to ensure compliance with Corporation standards.
- C. Construction plans and specifications shall be strictly adhered to, but the Corporation reserves the right to issue change-orders of any specifications, due to unforeseen circumstances during the design phase, to better facilitate construction or operation of the Applicant's facility. All change-order amounts shall be charged to the Applicant.

PART II. Request for Service to Subdivided Property

This section contains additional requirements for Applicants that are developers as defined in Section C Definitions.

1. **Sufficient Information** - Applicants shall provide the Corporation sufficient information describing the level and manner of service requested and the timeline for initiation of this service. The following is the minimum information needed for an engineering evaluation of the requested service to the property described in the application.
 - A. Completion of requirements described in Section F Part I, including completing the Non-Standard Service Application.
 - B. The applicant shall provide the Corporation with details concerning access to the property during evaluation of the application.
 - C. The applicant shall be notified in writing by the Corporation or designated representative the timeframe within which the requested service can be provided and the costs for which the applicant will be responsible, in accordance with the details described on the Applicant's request for service.
2. **Service within Subdivisions** – The Corporation's obligation to provide service to any customer located within a subdivision governed by this Section is strictly limited to the level and manner of the nonstandard service specified by the Applicant. The Applicant is responsible for paying for all costs necessary for non-standard service to a subdivision as determined by the Corporation under the provisions of this Tariff and specifically the provisions of this Section; if the Applicant fails to pay these costs, the Corporation has the right to require payment of these costs by any one or more of the persons purchasing lots or homes within such subdivision before the Corporation is obligated to provide water service (Texas Water Code Section 13.2502). In addition, the Corporation may elect to pursue any remedies provided by the Non-Standard Service Contract if one has been executed. Applicant is advised that purchasers of lots also may have legal recourse to the Applicant under Texas law, including but not limited to, Texas Water Code Section 13.257, and the Texas Business and Commerce Code Chapter 17, Subchapter E Deceptive Trade Practices & Consumer Protection Act. The Applicant must provide the following in addition to all other information otherwise required by this Section:
 - A. Map and legal description of the area to be served using map criteria in 16 TAC 24.105(a)(2)(A-G)).
 1. Time frame for:
 2. Initiation of service
 - B. Service to each additional or projected phase following the initial service.
 - C. Detailed description of the nature and scope of the project/development for initial needs.
 - D. Phased and final needs, including a map showing each phase, and the projected land uses that support the requested level of service for each phase.

- E. Flow and pressure for anticipated level of fire protection requested, including line size and capacity.
- F. Specific infrastructure needs for anticipated level of fire protection requested, including line size and capacity.
- G. Any additional information requested by the Corporation necessary to determine the capacity and the costs for providing the requested service.
- H. Copies of all required approvals, reports and studies done by or for the Applicant to support the viability of the proposed development.
- I. Applicant must provide reasonably sufficient information, in writing, to allow the Corporation to determine whether the level and manner of service specified by the Applicant can be provided within the time frame specified by the Applicant and to generally determine what capital improvements, including expansion of capacity of the Corporation's production, treatment and/or storage facilities and/or general transmission facilities properly allocable directly to the service request are needed. If the Applicant proposes development in phases, the Applicant should specify the level and manner of service and the estimated time frame within which that service must be provided for each phase, and the Applicant must depict the currently estimated location of each phase on the maps required under 16 TAC Section 24.105(a)(2) (A-G). It is important that the Applicant's written request be complete. A complete application by the Applicant should include:
 - 1) the proposed improvements to be constructed by the Applicant.
 - 2) a map or plat signed and sealed by a licensed surveyor or registered professional engineer.
 - 3) the intended land use of the development, including detailed information concerning the types of land uses proposed.
 - 4) the projected water demand of the development when fully built out and occupied, the anticipated water demands for each type of land use, and a projected schedule of build-out.
 - 5) a schedule of events leading up to the anticipated date upon which service from the CCN holder will first be needed; and
 - 6) a proposed calendar of events, including design, plat approval, construction phasing and initial occupancy.

Applicant must establish that current and projected service demands justify the level and manner of service being requested. In making his/her written request for service, the Applicant must advise the Corporation that he/she may request expedited decertification from the PUC.

Upon payment of the required fees, the Corporation shall review Applicant's service request. If no additional information is required from Applicant, the Corporation will prepare a written report on Applicant's service request, subject to any final approval by the Corporation's governing body (if applicable) which must be completed within 90 days from the date of application and payment of the required fees. The Corporation's written report will state whether the requested service will be provided, whether the requested service can be provided within the time frame specified by the Applicant, and the costs for which the Applicant will be responsible (including capital improvements, easements or land acquisition costs, and professional fees).

In the event the Corporation's initial review of the Applicant's service shows that additional information is needed, the Corporation will notify Applicant of the need for such additional information. Notice of the need for additional information will be made in writing within 30 days of the date the Corporation receives the Applicant payment of the required fees. Applicant should respond to the Corporation's request for additional information within 15 days of receipt of the Corporation's written request. In any case, the Corporation will provide the written report, including

any final approval by the Corporation's Board (if applicable) within 90 days from the date of the initial written application and payment of all required fees.

By mutual written agreement, the Corporation and the Applicant may extend the time for review beyond the 90 days provided for expedited petitions to the PUC.

3. **Final approval** – Upon final approval by the Corporation and acceptance of proposal for service by the Applicant, a non-standard service contract will be executed, and the Corporation shall provide service according to the conditions contained in the Non-Standard Service Contract.

SECTION G.

RATES AND SERVICE FEES

Unless specifically defined in this Tariff, all fees, rates, and charges as stated shall be non-refundable.

1. **Service Investigation Fee** - The Corporation shall conduct a service investigation for each service application submitted at the Corporation office. An initial determination shall be made by the Corporation, without charge, as to whether the service request is Standard or Non-Standard. An investigation shall then be conducted, and the results reported under the following terms:
 - A. All Standard Service requests shall be investigated without charge and all applicable costs for providing service shall be quoted in writing to the Applicant within ten (10) working days of application.
 - B. All Non-Standard Service requests shall be subject to a fee, appropriate to each project, of sufficient amount to cover all administrative, legal, and engineering fees associated with investigation of the Corporation's ability to deliver service to the Applicant to;
 - 1) provide cost estimates of the project,
 - 2) to present detailed plans and specifications as per final plat,
 - 3) to advertise and accept bids for the project,
 - 4) to present a Non-Standard Service Contract to the Applicant, and
 - 5) to provide other services as required by the Corporation for such investigation. A Non-Standard Service Contract shall be presented to the Applicant within a suitable amount of time as determined by the complexity of the project. (See Section F.)
2. **Membership Fee** - At the time the application for service is approved, a refundable Membership Fee must be paid for each service requested before service shall be provided or reserved for the Applicant by the Corporation. The membership fee cannot be more than 12 times the minimum monthly base rate.
 - A. The Membership Fee for water service is \$300.00 for each service unit.
 - B. Membership fee for oversized or Master Metered Accounts shall be based on multiples of meter size equivalence.
3. **Easement Fee** – A fee of 25.00 will be assessed upon obtaining membership to cover costs associated with the filing of easements in the appropriate county.
4. **Administrative Fee** – A fee of 25.00 will be added to the cost of obtaining membership to cover administrative costs associated with the application process.
5. **Easement Fee with Line Extension** - When the Corporation determines that private right-of-way easements and/or facilities sites are necessary to provide service to the Applicant, the Applicant shall be required to make good faith efforts to secure easements in behalf of the Corporation and/or pay all costs incurred by the Corporation in validating, clearing, and retaining such right-of-way in addition to tap fees otherwise required pursuant to the provisions of this Tariff. The costs may include all legal fees and expenses necessary to attempt to secure such right-of-way and/or facilities sites on behalf of the Applicant. (See Section E 3., Section F 8. b.)
6. **Installation Fee** - The Corporation shall charge an installation fee for service as follows:
 - A. Standard Service shall include all current labor, materials, engineering, legal, customer service inspection, and administrative costs necessary to provide individual metered water or wastewater service and shall be charged on a per tap basis as computed immediately prior to such time as metered service is requested and installed.
 - B. Non-Standard Service shall include any and all construction labor and materials, inspection,

administration, legal, and engineering fees, as determined by the Corporation under the rules of Section F of this Tariff.

C. Standard and Non-Standard Service Installations shall include all costs of any pipeline relocations as per Section E of this Tariff.

7. **Meter Tap Fee** – Connect water service to main water line at the service location. The Corporation shall charge a non-refundable tap fee according to the size of the piping connection. The larger the pipe size connection, the higher the tap fee. Any debt owed to the Corporation and all fees shall be paid in advance of installation. (16 TAC 24.86 (a)(1)(A))
8. **Meter Drop-In Fee** – Connect meter to existing tap. The Corporation shall charge a non-refundable meter drop-in fee according to the size of the meter.
9. **Road Bore Fee** - The drilling and enlarging of channels under roads for pipeline installations. The bore will be contracted out and billed at the actual cost charged by the contractor for the bore installation.
10. **Equity Buy-In Fee**- In addition to the Membership Fee, each Applicant for new service that requires a new service tap shall be required to achieve parity with the contributions to the construction of the Corporation’s facilities capacity that have been made previously by existing Members. This fee shall be assessed immediately prior to providing service on a per service unit basis for each service requested and shall be assigned and restricted to that property for which the service was originally requested. This fee shall be set aside for future capacity improvements such as line upgrades, new tanks, treatment, or production. The formula applied to such fee calculated annually after receipt of the system audit is as follows: Sample Equity-Buy-in Fee Calculation:
 Total Contributions and Assets of the Corporation minus (-)
 Accumulated Depreciation minus (-)
 Outstanding Corporation Debt Principal minus (-)
 Developer Contributions minus (-)
 Grants received divided by
 Total Number of Members / Customers equals = Average Net Equity Buy-In Fee
 Meter Installation – Straight Set (no line extension, no road crossing)
 Single Dwelling or Single Non-Residential Business Connection
11. **Impact Fee** - In addition to the Equity-Buy-In Fee, each applicant for new service where a new tap is necessary shall be assessed a one-time charge imposed to help fund infrastructure improvements needed to accommodate new growth. These fees are based on a reasonable estimate of capital improvement needs and supported by engineering or financial analysis, to offset the financial impact of new developments on the water system.

Size	Meter Tap Fee	Meter Drop-in Fee	Equity Buy-In-Fee	Impact Fee	Membership Fee	Easement	Total
3/4"	\$1,300.00	\$550.00	\$2,250.00	\$850.00	\$300.00	\$50.00	\$5,300.00
1"	\$3,250.00	\$1,375.00	\$2,250.00	\$1,425.00	\$750.00	\$50.00	\$9,100.00
1 ½"	\$6,500.00	\$2,750.00	\$2,250.00	\$2,825.00	\$1,500.00	\$50.00	\$15,875.00
2"	\$10,400.00	\$4,400.00	\$2,250.00	\$4,525.00	\$2,400.00	\$50.00	\$24,025.00
3"	\$13,000.00	\$6,050.00	\$2,250.00	\$5,650.00	\$3,000.00	\$50.00	\$30,000.00

Larger than 3” meters will be handled on a case-by-case basis.

Developer pays full total fee for new service.

12. **Infrastructure Reimbursement Fee-** An approved Applicant may have to pay on a prorated basis an infrastructure reimbursement fee to the Corporation for the purpose of reimbursing a member or other party that made the initial capital outlay to extend service to that area within five (5) years of initial installation.

PART III-Monthly Charges

1. Base Rate

Water Service - The monthly charge for standard metered water service is for a 3/4” meter. The base rate is charged per living unit equivalent for master meter accounts. The 3/4” meter charge is used as a base multiplier for larger non-standard meters in accordance with the following chart based on American Water Works Association maximum continuous flow specifications:

METER	3/4" MONTHLY SIZE	MONTHLY RATE
3/4"	1.0	\$80.00
1"	2.5	\$200.00
1 1/2"	5.0	\$400.00
2"	8.0	\$640.00
3"	10.0	\$800.00
4"	20.0	\$1,600.00

2. Gallonage

A) Billing period.

0 – 2,000	Gallons	\$ 7.05
2,001 – 15,000	Gallons	\$ 7.50
15,001 – 30,000	Gallons	\$ 7.75
30,001 – and up	Gallons	\$ 8.00

C) Bulk Water Rate \$0.05 (5 cents) per gallon with a 200-gallon minimum.

D) The Corporation shall, as required by Texas Water Code Section 5.701, collect from each of its retail customers a regulatory assessment equal to one-half of one percent of the charge for retail water service. This charge shall be collected in addition to other charges for utility service. This fee is collected on all charges pertaining to Section G. 7. Monthly Charges of this Tariff. (16 TAC 291.76d))

E) The Corporation, as a part of its billing process, collects voluntary contributions on behalf of the Bell, Lampasas, Coryell, and Burnet County Voluntary Fire Departments.

3. Assessment – If at the end of the fiscal year, or in the event of emergency repairs, the Board of Directors determines the total amount derived from the collection of water charges to be insufficient for the payment of all costs incident to the operation of the Corporation’s system during the year in which such charges are collected, the Board shall make and levy an assessment against each Member of the Corporation as the Board may determine or as may be required by Rural Development, so that the sum of such assessments and the amount collected from water and other charges is sufficient to fully pay all costs of the operation, maintenance, replacement and repayment of indebtedness for the year’s operations.

4. Late Payment Fee - Once per billing period, a penalty of \$20.00 shall be applied to delinquent bills.

This late payment penalty shall not be applied to any balance to which the penalty was applied in a

previous billing but shall be applied to any unpaid balance during the current billing period.

- 5. Returned Check Fee** – In the event a check, draft, or any other similar instrument is given by a person, firm, Corporation, or partnership to the Corporation for payment of services provided for in this Tariff, and the instrument is returned by the bank or other similar institution as insufficient or non-negotiable for any reason, the account for which the instrument was issued shall be assessed a return check charge of \$30.00.
- 6. Reconnect Fee** - The Corporation shall charge a \$100.00 reconnect fee due to non-payment or re-service where service membership previously existed. There will be no reconnects after hours, on weekends, or on holidays.
- 7. Meter Test Fee** – The Corporation shall test a Member’s meter upon written request of the Member. A charge of \$100.00 shall be imposed on the affected amount.
- 8. Service Trip Fee** - The Corporation shall charge a trip fee of \$50.00 if payment is collected on lock day, collecting payment for services or customer initiates requests for service; for response to damage of the Corporation’s infrastructure, customer service inspections, suspicion of meter tampering, bypass or diversion of service, obstruction of meter and for the purpose of disconnecting or collecting payment.
- 9. Equipment Damage Fee** - If the Corporation’s facilities or equipment have been damaged by tampering, by-passing, installing unauthorized taps, reconnecting service without authority, or other service diversion, a fee shall be charged equal to the actual costs for all labor, material, and equipment necessary for repair, replacement, and other Corporation actions. This fee shall be charged and paid before service is re-established. If the Corporation’s equipment has not been damaged, a fee equal to the actual costs for all labor, material, equipment, and other actions necessary to correct service diversions, unauthorized taps, or reconnection of service without authority shall be charged. All components of this fee will be itemized, and a statement shall be provided to the Member. If the Corporation’s facilities or equipment have been damaged due to negligence or unauthorized use of the Corporation’s equipment, right-of-way, or meter shut-off valve, or due to other acts for which the Corporation incurs losses or damages, the Member shall be liable for all labor and material charges incurred because of said acts or negligence.
- 10. Meter Tampering and Damage to Property Penalty** - In addition to the Equipment Damage Fee, the Corporation may charge a penalty for “Tampering” as defined in Section E 23. The penalty may only be assessed against the person who committed the Tampering. An owner cannot be assessed for the Tampering committed by their tenant. The penalty shall not exceed six (6) times the Base Rate.
- 11. Transfer Fee** - An Applicant for service who is a Transferee shall complete all required application forms, etc., and pay a Transfer Fee of \$75.00 as well as any difference in membership value.
- 12. Information Copy Fee** - A fee for the copying of any public information will be charged to the person requesting that information in compliance with the cost rules of the Texas Government Code Section 552.261 et. seq.
- 13. Customer Service Inspection Fee** - A fee of \$ 75.00 will be assessed each Applicant before permanent continuous service is provided to new construction. Note: this charge is included in the tap fee.
- 14. Temporary Service for Inspections Fee-** The Corporation will charge a trip fee in the amount of \$100.00 to provide temporary service for inspection purposes only. The request must be made 24 hours prior to the inspection and a representative is required to be present at the time the service is provided. Inspections are completed between the hours of 9:00 AM and 3:00 PM.
- 15. Master Metered Accounts-** An account metered for one-member owner/customer, one-member

Corporation or business to service residential multi-unit apartments, residential structures, RV, or mobile home parks. When authorized by the Corporation, a ¾" master metered account will be billed at the monthly rate multiplied by the number of applicable living units. This is in addition to the water usage charge. Master metered accounts with meters larger than ¾" will be billed by their equivalent in size to the standard ¾" meters. The member/owner must execute with the Corporation a Master Meter Service Agreement, which is set by the Bylaws and Tariff of the Corporation.

16. Customer Notice Provisions – The Corporation shall give notice of monthly rate changes by email and posted on the website at www.kempnerwsc.com at least 30 days prior to the effective date of the new rate. The notice shall contain the old rates, new rates, effective date of the new rate, date of Board authorization, and the name and phone number of the Corporation's contact person designated to address inquiries about the rate change.

17. Franchise Fee Assessment – A fee of 2% of the amount billed for water service will be assessed to each customer whose meter is located inside the corporate limits of the City of Kempner, Texas as required by the City's ordinance requiring a franchise fee.

18. Regulatory Assessment – A fee of 0.5% of the amount billed for water service will be assessed for each customer, this assessment is required under Texas law and TCEQ regulations. NOTE: The regulatory assessment is not to be collected from state agencies, wholesale customers, or buyers of non-potable (not drinkable) water.

19. Additional Assessment – In the event any federal, state, or local government imposes on the Corporation a "per meter" fee or an assessment based on a percent of water charges, this fee or assessment will be billed and collected as a "pass through" charge to the customer.

20. Other Fees – All services outside the normal scope of utility operations that the Corporation may be compelled to provide at the request of a customer or Member shall be charged to the recipient based on the cost of providing such service.

PART IV-Cross Connection Backflow Testing –

1. The Backflow and Cross-Connection Control program is one of the steps mandated by the Texas Commission on Environmental Quality (TCEQ) rules, 30 TAC Chapter 344, requiring a Reduced Pressure Zone backflow prevention assembly (RPZ), be installed on all irrigation systems where there is an on-site sewage facility (OSSF/septic system).

A. KWSC is required to comply with the TCEQ rules and is also required to survey the water system to identify the customers that have a lawn irrigation system and an OSSF/septic system in order to follow the TCEQ requirements.

B. An RPZ must be inspected upon installation with a copy of the inspection report provided to Kempner Water Supply Corporation (KWSC) within 10 days of completion. The RPZ must also be inspected on an annual basis and the inspection report is to be provided to KWSC every year. If KWSC has not received an inspection report within 10 days of the due date, we will perform the inspection and send you a bill for \$75.00. The inspection must be done by a person holding a Backflow Prevention Assembly (BPAT) license.

C. When transferring a meter, all members must provide an RPZ certified inspection form in accordance with state and local requirements before the meter can be transferred out of the previous owner's name. If a sprinkler system is going to be installed after the meter is purchased, an RPZ must be installed and tested. All initial and annual inspections must be sent to KWSC within 10 days of installation and inspection.

D. Failure to provide RPZ inspection reports to KWSC office within 10 days will result in disconnection of service.

2. Additional Sources requiring an RPZ:

A. All customer/members that have **active or inactive wells** on their property will now be required to have a Reduced Pressure Zone (RPZ) back flow and back pressure preventer installed at their meter location that can be tested upon installation and every year afterwards. Test results need to be received by KWSC within 10 days of completion.

B. All KWSC meters that supply swimming pools will be required to have an “Air Gap” or a Reduced Pressure Zone (RPZ) back flow and back pressure preventer installed at their meter location that can be tested upon installation and every year afterwards. Test results need to be received by KWSC within 10 days of completion.

C. All KWSC meters that supply convenience stores with carbonated water machines, sell Gas or Diesel will be required to have a Reduced Pressure Zone (RPZ) back flow and back pressure preventer installed at their meter location that can be tested upon installation and every year afterwards. Test results need to be received by KWSC within 10 days of completion.

D. You can contact KWSC at (512)932-3701 or (254)547-9430 or the local TCEQ office at (254)751-0335 for additional information to comply with this law and for information about their requirements for annual testing.

Part V - Bulk Water Sales

Bulk water sales are defined as the sale of bulk water to contractors, private or public entities, or for agriculture use throughout the system.

A. The length of time of this type of application will be determined by the General Manager, on a case-by-case basis.

B. The location at which the bulk water meter will be set will be determined by the Corporation’s Distribution Manager.

C. All bulk water meters provided must be no greater than 4”. A current certificate of calibration will also be provided to the Corporation before meter is accepted for use.

D. Applications where an RPZ is required, a copy of the test results must be within a 12-month period and also provided to Corporation before any RPZ is accepted for use.

E. Installation of said meters and RPZ will be supervised by Corporation staff to ensure that the proper location and installation is established.

F. Any tampering, misuse, water sales, water theft, or illegal connection to take water without the intent to purchase will fully result in permanent disconnection and prosecution.

G. Service Trip Fee. A service trip fee will be assessed for each service trip to water meter location, as a result of a request by the customer other than the response to damage of the Corporation’s or another member’s property.

H. Other Fees. All services outside the normal scope of utility operations, which the Corporation may be compelled to provide at the request of a customer or member shall be charged to the recipient based on the cost of such service.

I. Bulk water sold to customers that cannot provide a meter will be purchased at the Corporation office.

J. Corporation staff will assist with the metering and supervise the filling of all tanks at this location.

K. Water will be purchased on each load basis.

L. Bulk Water is NOT for resale.

Part VI - Lots Not Being Connected to Corporation’s Water

The Corporation acknowledges that not all lots in the Applicant’s subdivision will be connecting to the Corporation’s water supply. When Applicant submits its plans, lots not being connected will be clearly marked and they will not be used in any calculations for payment of Membership Fee. All water well lots will be inspected for cross connection Customer Service Inspection (CSI)

SECTION H.
DROUGHT CONTINGENCY AND EMERGENCY WATER
DEMAND MANAGEMENT PLAN

1. Introduction

The goal of this plan is to cause a reduction in water use in response to drought or emergency conditions so that the water availability can be preserved. Since emergency conditions can occur rapidly, responses must also be enacted quickly. This plan has been prepared in advance considering conditions that will initiate and terminate the water use restriction program. All members are equally subject to and restricted by the plan, including HOA restricted covenants.

A Drought/Emergency Management Committee consisting of three Board Members and the System Manager will monitor usage patterns and public education efforts and will make recommendations to the Board on future conservation efforts, demand management procedures, or any changes to this plan. The Committee will develop public awareness notices, bill stuffers, and other methods that will begin and continue as a constant type of reminder that water should always be conserved, not just during a drought or emergency. This Committee will also review and evaluate any needed amendments or major changes due to changes in the Corporation's service area population, distribution system, or supply. This review and evaluation will be done on a regular basis of five years unless conditions necessitate more frequent amendments.

The plan will be implemented according to the three stages of water use restrictions as imposed by the Board. Paragraph 4 describes the conditions that will trigger these stages.

2. Public Involvement

Opportunity for the public to provide input into the preparation of the Plan was provided by the Board by scheduling and providing public notice of a public meeting to accept input on the Plan. Notice of the meeting was provided to all customers. In the adoption of this plan, the Board considered all comments from customers.

3. Coordination with Regional Water Planning Group

Kempner Water Supply Corporation works within the Brazos G water planning group and is part of the regional water plan.

<http://brazosgwater.org/Updated-2016-Plan-8-25-2016/Volume-I/5-21-Lampasas.pdf>

4. Trigger Conditions

The Drought Emergency Management Committee is responsible for monitoring water supply and demand conditions monthly (or more frequently if conditions warrant) and shall determine when conditions warrant initiation or termination of each stage of the plan, that is, when the specified triggers are reached. The Committee will monitor monthly operating reports, water supply or storage tank levels and/or rainfall as needed to determine when trigger conditions are reached. The triggering conditions described below take into consideration: the vulnerability of the water source under the drought of record conditions, the production, treatment and distribution capacities of the system, and member usage based upon historical patterns.

A. Stage I - Mild Condition: Stage I Voluntary Water Restriction allocation measures may be implemented when one or more of the following conditions exist:

- 1) Water consumption has reached 70 percent of daily maximum supply for three (3) consecutive days.
 - 2) There is an extended period (at least eight (8) weeks) of low rainfall and daily use has risen 20 percent above the use for the same period during the previous year.
- B. Stage II - Moderate Conditions: Stage II Mandatory Water Restriction measures may be implemented when one of the following conditions exist:
- 1) Water consumption has reached 80 percent of the amount available for three consecutive days.
 - 2) The water level in any of the water storage tanks cannot be replenished for three (3) consecutive days. The lowest recorded tank levels are below 8 feet for 3 consecutive days.
- C. Stage III – Moderate to Severe Conditions: Stage III Mandatory Water Restriction measures may be implemented when one of the following three conditions exist:
- 1) Failure of a major component of the system or an event which reduces the minimum residual pressure in the system below 20 psi for a period of 24 hours or longer.
 - 2) Water consumption by 90 percent or more of the maximum available for three (3) consecutive days.
 - 3) Water consumption of 100 percent of the maximum available and the water storage levels in the system drop for one 24-hour period.
- D. Stage IV – Severe Conditions: Stage IV Mandatory Water Restriction may be implemented when one of the following three conditions exist:
- 1) Failure of a major component of the system or an event which reduces the minimum residual pressure in the system below 20 psi for a period of 24 hours or longer.
 - 2) Water consumption by 100 percent or more of the maximum available for three (3) consecutive days.
 - 3) Water consumption of 100 percent of the maximum available and the water storage levels in the system drop for one 24-hour period.
- E. Stage V – Emergency Conditions: Stage V Mandatory Water Restriction may be implemented when one of the following five conditions exist:
- 1) Major water production or distribution limitations.
 - 2) Natural or man-made contamination of the water supply source(s).
 - 3) The declaration of a state of disaster due to drought conditions in a county or counties served by the Corporation.
 - 4) Reduction of wholesale water supply due to drought conditions.
 - 5) Other unforeseen events which could cause imminent health or safety risks to the public.

5. Stage Levels of Water Allocations

The stage levels of water allocations are to be placed in effect by the trigger in Paragraph 4. The System shall institute monitoring and enforce penalties for violations of the Drought Plan for each of the Stages listed below. The water allocation measures are summarized below.

A. Stage I - Mild Conditions

- 1) Customers are requested to voluntarily restrict water usage.
- 2) Voluntary watering days: Odd Address Tuesday and Friday, Even Address Monday and Thursday.
- 3) Increase leak detection and repair efforts.

B. Stage II - Moderate Conditions

- 1) Mandatory water restrictions two days a week, only.
- 2) Mandatory watering days: Odd Addresses Tuesday and Friday, Even Addresses Monday and Thursday.
- 3) Water main flushing only as needed.
- 4) Increase utility oversight of watering schedule and water waste.
- 5) Parks, institutional and commercial landscapes limited to drip and handheld hose.
- 6) Make public service announcements as conditions change.
- 7) Notify TCEQ

C. Stage III – Moderate to Severe Conditions

- 1) Mandatory water restrictions one day a week, only
- 2) Mandatory watering days: Odd Addresses Tuesday, Even Addresses Thursday
- 3) Water use shall be decreased by 20%.
- 4) Implementation of water usage surcharge(s) for excessive use.
- 5) The corporation shall continue enforcement and educational efforts.
- 6) Make public service announcements as conditions change.
- 7) Notify TCEQ

D. Stage IV – Moderate to Severe Conditions

- 1) All outside watering with can or bucket only and only in the AM hours.
- 2) Water main flushing only as needed.
- 3) Pro rata allocation to wholesale customers per TWC 11.039
- 4) The corporation shall continue enforcement and educational efforts.
- 5) Formal public notification by Corporation officials of Stage 4 Drought conditions
- 6) Notify TCEQ

E. Stage V – Moderate to Severe Conditions

- 1) All outdoor and non-essential uses of water strictly prohibited.
- 2) Discontinue water main flushing.
- 3) Pro rata allocation to wholesale customers per TWC 11.039
- 4) Formal public notification by Corporations officials of Emergency Condition
- 5) Notify TCEQ and appropriate Emergency contacts.

NOTE:

- Refer to your water purchase contract for additional restrictions/requirements that may be imposed by stipulations from the wholesale supplier.
- There may be additional restrictions imposed by Governmental Entities.
- Meters will be read as often as necessary to ensure compliance with this program for the benefit of all the customers.
- Starting at Stage 3 the charge per thousand gallons will be: 0 – 15,000 = \$7.05 per 1000 gallons used, 15,001 – 30,000 = \$9.45 per 1000 gallons used, >30,000 = \$12.27 per 1000 gallons used.
- Starting at Stage 4 the charge per thousand gallons will be: 0 – 15,000 = \$7.19 per 1000 gallons used, 15,001 – 30,000 = \$11.56 per 1000 gallons used, >30,000 = \$22.91 per 1000 gallons used.

6. Initiation and Termination Procedures

Once a trigger condition occurs, the Corporation, or its designated responsible representative, shall,

based on recommendation from the Chairperson of the Drought/Emergency Management Committee, decide if the appropriate stage of water use restrictions shall be initiated. The initiation may be delayed if there is a reasonable possibility the water system performance will not be compromised by the condition. If water allocation is to be instituted, written notice to the customers shall be given.

Written notice of the proposed water use restriction measure shall be mailed or delivered to each affected customer upon the initiation of each stage. Notice may be sent by email if the customer chooses the option to receive email notices instead of mailed notices and provides a valid email address. In addition, upon adoption of Stage III, IV and Stage V, a notice will be placed in a local newspaper or announced on a local radio or television station. The customer notice shall contain the following information:

- A. The date water restriction shall begin,
- B. The expected duration,
- C. The stage (level) of water allocations to be employed,
- D. Penalty for violations of the water allocation program, and
- E. Affected area or areas.

A sample Customer Notice of Water Restrictions and Conditions is included in Miscellaneous Transaction Forms of this Tariff.

If the water allocation program extends 30 days, then the Chairperson of the Drought/Emergency Management Committee or manager shall present the reasons for the allocations at the next scheduled Board Meeting and shall request the concurrence of the Board to extend the allocation period.

When the trigger condition no longer exists then the responsible official may terminate the water allocations provided that such an action is based on sound judgment. Written notice of the end of allocations shall be given to customers. A water allocation period may not exceed 60 days without extension by action of the Board.

7. Penalties for Violations

- A. First Violation – The customer will be notified of their specific violation.
- B. Second Violation – After the initial notice, the utility may install a flow restricting device in the line to limit the amount of water which will pass through the meter in a 24-hour period. The utility will charge the customer for the actual cost of installing and removing the flow restricting device.
- C. Subsequent Violations - The Corporation will assess an additional penalty * of \$150.00 for violations continuing after the Second Violation. The notice of subsequent violation will include the amount of the penalty to be assessed and will inform the violator that failure to pay the penalty will result in termination of service to be restored only upon payment of penalty and service call to restore service. The notice will also inform the customer that the Corporation may also install a flow restricting device in the customer's meter service to limit the amount of water that will pass through the meter in a 24-hour period. The costs of this procedure will be for the actual work and equipment and shall be paid for by the customer. Removal of this device will be considered Meter Tampering and will result in disconnection of service without further notice. The notice of subsequent violation will also inform the customer those additional penalties will be assessed for additional violations; and in addition to penalties, that water service will be terminated for a period of three (3) days regardless of whether the customer pays the penalties for the additional violations.

D. Termination – For each continuing violation, the Corporation will assess an additional penalty of \$300.00 plus disconnect and reconnect fees. Service will also be terminated for a period of three (3) days. The notice of termination will show the date on which water service will be terminated and the date on which service will be restored, unless the customer has failed to pay delinquent penalties, assessments, or charges. Service will remain off until any delinquent penalty or other assessment is fully paid including a charge for the service call to restore service.

8. Exemptions or Waivers

1. The Drought/Emergency Management Committee may, in writing, grant temporary variance for existing water uses otherwise prohibited under this Plan if it is determined that failure to grant such variance would cause an emergency condition adversely affecting the health or sanitation for the public or the person requesting such variance and if one or more of the following conditions are met:

A. Compliance with this Plan cannot be technically accomplished during the duration of the water supply shortage or other condition for which the Plan is in effect.

Alternative methods can be implemented which will achieve the same level of reduction in water use.

2. Persons requesting an exemption from the provisions of this Plan shall file a petition for a variance with the Drought/Emergency Management Committee within five (5) days after the Plan or a particular drought response stage has been invoked or after a condition justifying the variance first occurs. All petitions for variances shall be reviewed by the Committee and shall include the following:

A. Name and address of the petitioner(s).

B. Purpose of water use.

C. Specific provision(s) of the Plan from which the petitioner is requesting relief.

D. A detailed statement as to how the specific provision of the Plan adversely affects the petitioner or what damage or harm will occur to the petitioner or others if petitioner complies with this Plan.

E. Description of the relief requested.

F. Period of time for which the variance is sought.

G. Alternative water uses restrictions or other measures the petitioner is taking or proposes to take to meet the intent of this Plan and the compliance date.

H. Other pertinent information, as requested by the Committee.

3. Variances granted by the Committee shall be subject to the following conditions, unless specifically waived or modified by the Committee or Board of Directors:

A. Variances granted shall include a timetable for compliance.

B. Variances granted shall expire when the water allocation is no longer in effect unless the petitioner has failed to meet specified requirements. No variance allowed for a condition requiring water allocation will continue beyond the termination of water allocation under Section.

C. Any variance for a subsequent water allocation must be petitioned again. The fact that a variance has been granted in response to a petition will have no relevance to the Committee's decision on any subsequent petition.

No variance shall be retroactive or otherwise justify any violation of this Plan occurring prior to the issuance of the variance.

The above 2025-2026 Tariff was reviewed and adopted by a majority vote of the Board of Directors of the Kempner Water Supply Corporation, at a meeting held on the 19th day of November 2025.

President, Billy Malady